



2014 Lake Links Workshop

"Lake Communities in Action"

French Planning Services Inc
www.lakeplan.com
www.frenchplanning.com

Supporting Partners
Ontario Trillium Foundation
Federation of Ontario Cottagers' Associations
Sustainable Eastern Ontario
Centre for Sustainable Watersheds
Ontario Ministry of Natural Resources and Forests
Mississippi Valley Conservation Authority
Cataraqui Region Conservation Authority
Rideau Valley Conservation Authority

Gord and Randy



How to get your lake plan off
the shelf?

...or

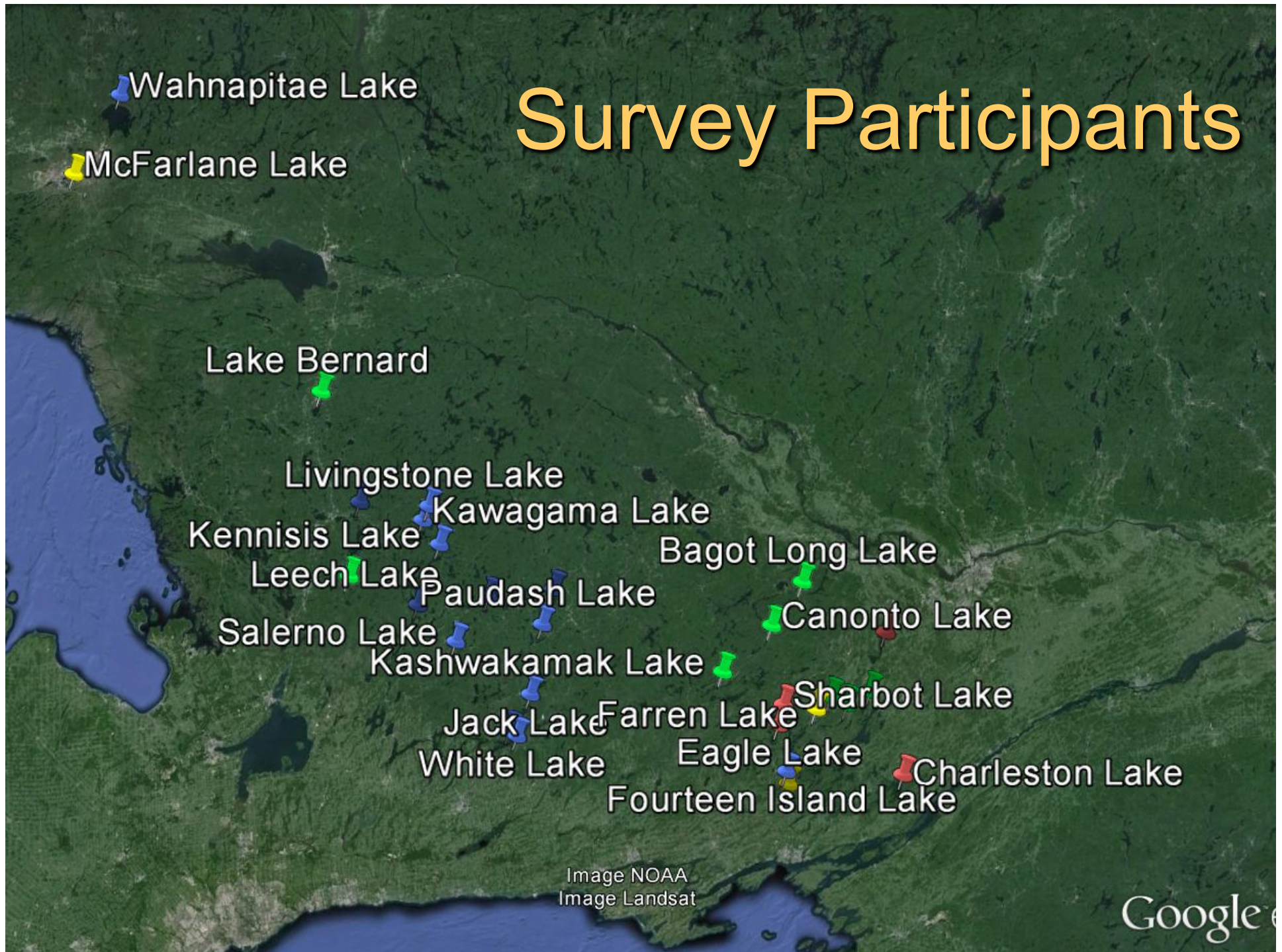
Ideas to shift your community
into action

Intro

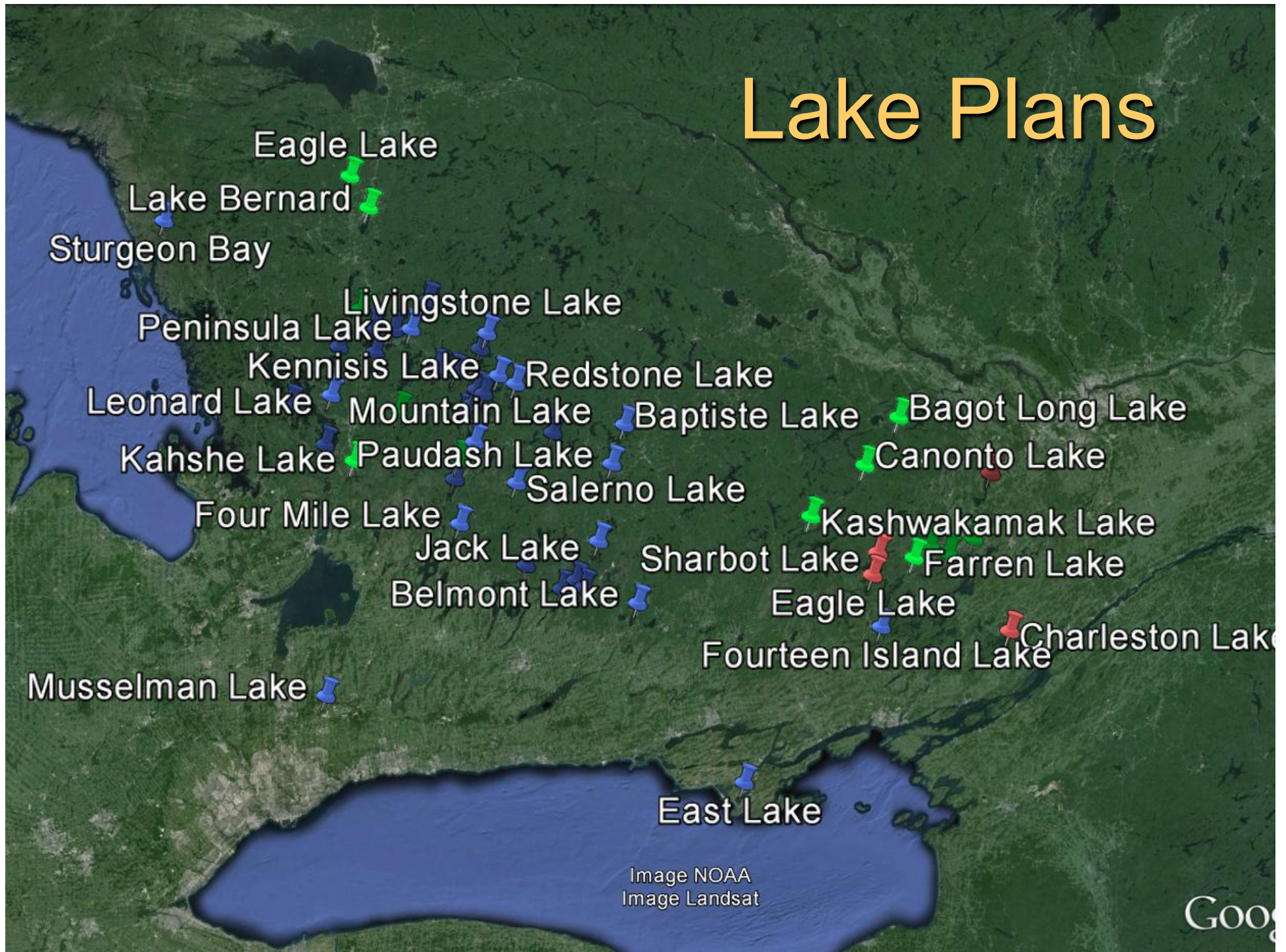


Our Happy Places!

Survey Participants



Lake Plans



Survey Central

Peninsula Lake

Livingstone Lake

Kawagama Lake

Kennisis Lake

Leech Lake

Mountain Lake

Miskwabi Lakes

Baptiste Lake

Paudash Lake

Salerno Lake

Jack Lake

White Lake
Stoney Lake

Image NOAA
Image Landsat

Google e

Lake Central



Survey East

Bagot Long Lake

Canonto Lake

Mississippi Lake

Kashwakamak Lake

Sharbot Lake

Chrisitie Lake

Otty Lake

Pike Lake

Farren Lake

Eagle Lake

Fourteen Island Lake

Charleston Lake

Image NOAA
Image Landsat

Google earth

Lake Plans East

Bagot Long Lake

Canonto Lake

Mississippi Lake

Kashwakamak Lake

Otty Lake

Chrisitie Lake

Sharbot Lake

Farren Lake

Eagle Lake

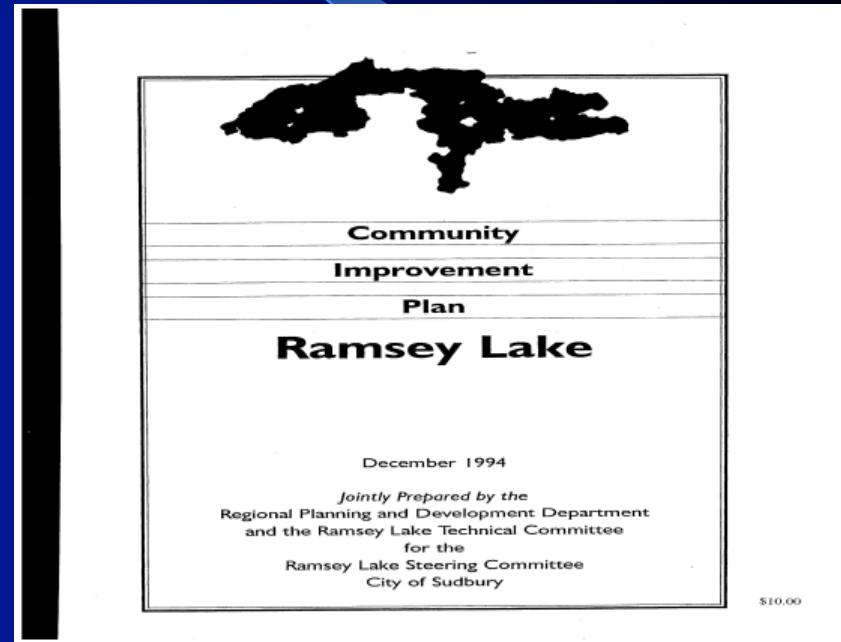
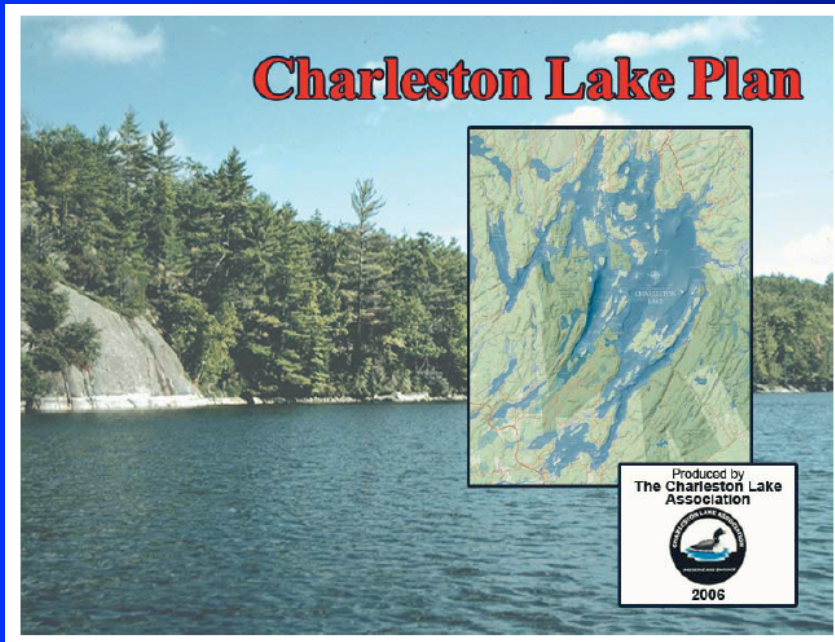
Fourteen Island Lake

Charleston Lake

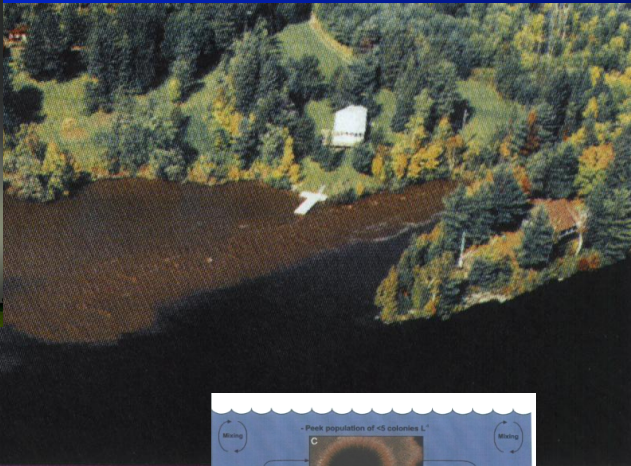
Image Landsat

Go

Lots of Pioneers



PENINSULA LAKE - It evolved from a rainstorm, a lot of science and a group of concerned people



A lot of science had to be translated...

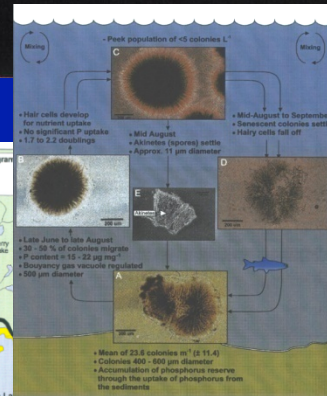
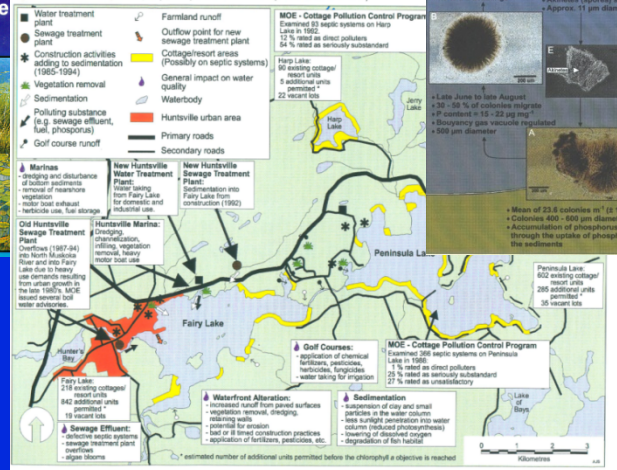
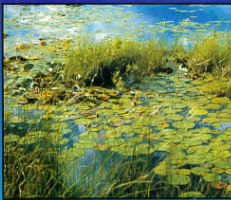
- Land Use Studies
- Paleocology
- Limnology
- Algal dynamics
- Fish Community
- Fish Habitat

... into community awareness and action

The Fairy and Peninsula Lakes Study, 1994 - 1998:

Effects of land use on the aquatic ecosystem

Kenneth J. Cornelisse and David O. Evans



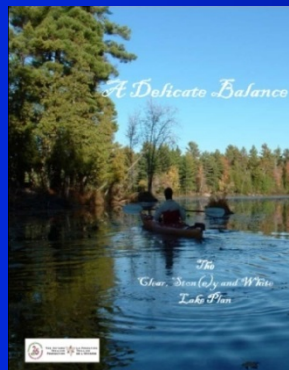
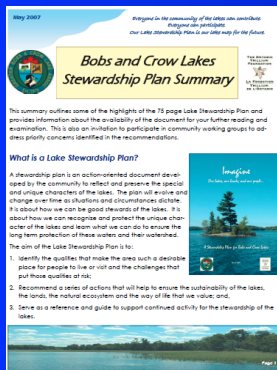
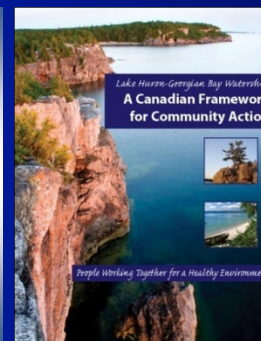
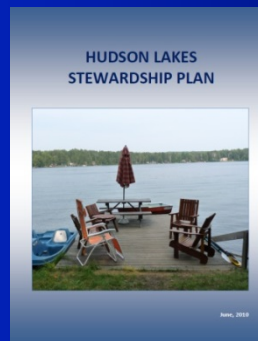
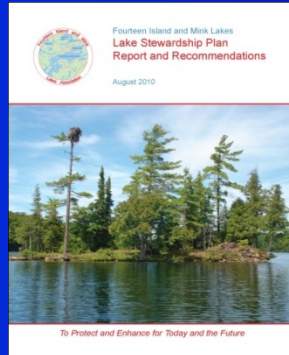
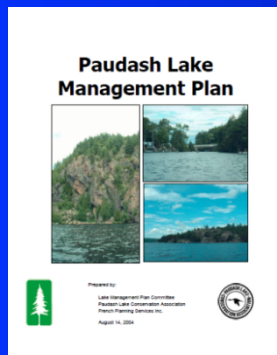
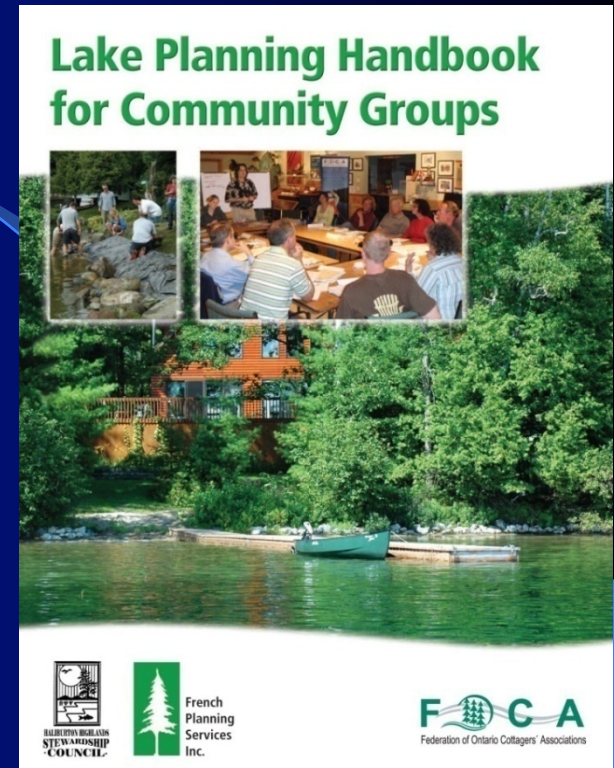
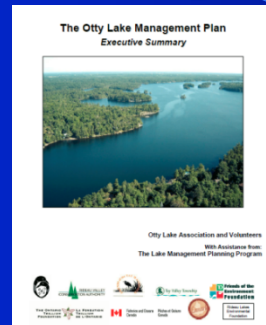
PENINSULA LAKE PLAN

... the future is on our lake !



Prepared by
French Planning Services Inc.
Brampton, Ontario
July 2001
www.frenchplanning.com

Lots of Strategic Planning Going On...



....and now there is a big need for action oriented projects and support!

RIVER COTTAGING GUIDELINES



Ministry of
Natural
Resources



Lakeshore Capacity Assessment Handbook: Protecting Water Quality in Inland Lakes on Ontario's Precambrian Shield

Fifth Draft, December 2000

Ministry of the Environment
Ministry of Natural Resources
Ministry of Municipal Affairs and Housing

LAKE SHORE CAPACITY STUDY TROPHIC STATES

LAKE SHORE CAPACITY STUDY FISHERIES

LAKE SHORE CAPACITY STUDY WILDLIFE

Lakealert Phase 2 Methodology

Ontario Ministry of Natural Resources
Hough, Stansbury and Associates Ltd.

WATER MANAGEMENT

POLICIES
GUIDELINES
PROVINCIAL WATER QUALITY OBJECTIVES
OF 1994
MINISTRY OF ENVIRONMENT AND ENERGY

JULY, 1994
Ontario

Lakescape

GUIDELINES FOR THE PLANNING AND DESIGN OF LAKE-
ORIENTED REGIONAL, HOUSING DEVELOPMENT OR PARKS
JAMES C. THOMPSON
JULY, 2003

LAKE PLANNING



Ministry of
Natural
Resources

RIVER COTTAGING GUIDELINES



Ministry of
Natural
Resources

Motivations



Motivations



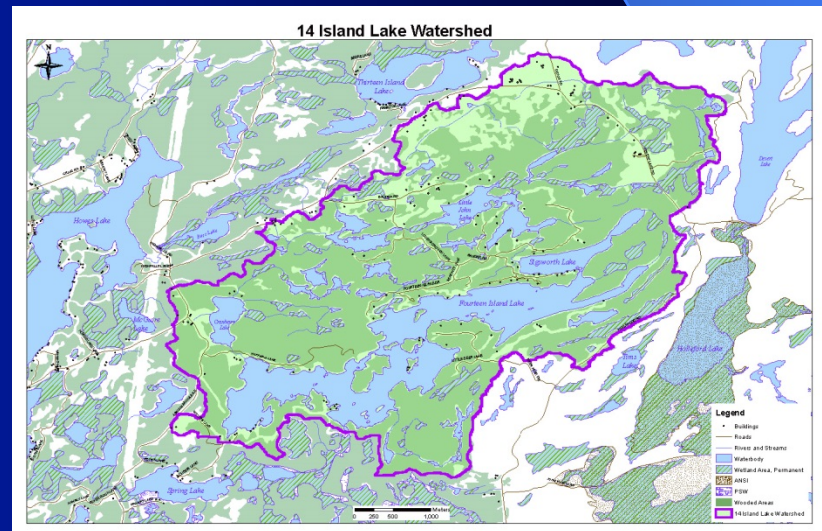
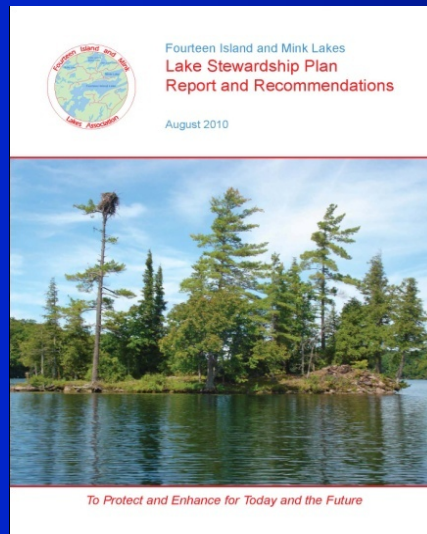
Motivations

- Threats and Issues
- “The Right Thing to do”



Farren Lake
Stewardship Action
Plan

May, 2012



Challenges to Preparing a Plan

- Getting started
- Funding
- Getting/keeping Community Involved
- Value of municipal involvement



People in our local communities...

Property Owners

Individuals and associations



Industry

Forestry, aggregate, agriculture and land development



Recreational Users

Boaters, canoes, campers, day users



Common Values

NGOs, Researchers and Schools



Business Operators

Resorts, marinas, retail, real estate



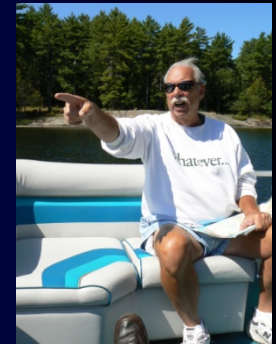
Government

Municipal, CA, MNR, MOE, EC



Lessons learned when engaging property owners and groups

- ✓ Face to Face contact is best
- ✓ Have the right attitude
- ✓ Provide funding, expertise or support
- ✓ Use a step wise approach
- ✓ Use various means of contact
- ✓ Engage their help ... and listen to their needs





*....process is as
important as the
product !*

Challenges to Implementing a Plan

- Keeping up Momentum
- Finding Volunteers
- Involving Municipalities
- Funding



Created Partnerships

- ✓ Stoney – MNR/DFO wetland evaluations
- ✓ Lake Partner MOE – Water quality
- ✓ Sturgeon Bay / Three Mile Lake – MOE/DFO – Blue green algae
- ✓ Toronto Zoo
- ✓ Coalition of Haliburton Property Owner Associations

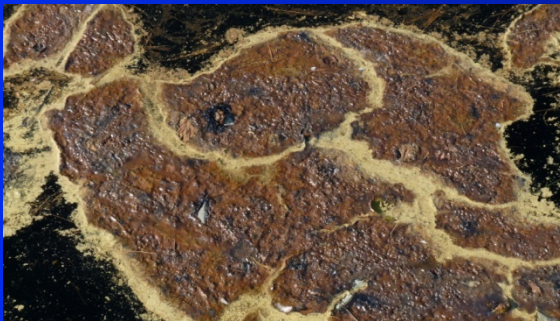


Lessons Learned

- Plan is a guide for the future
- Allows for community building
- Enhances municipal and government relationships
- Proves that science trumps perception



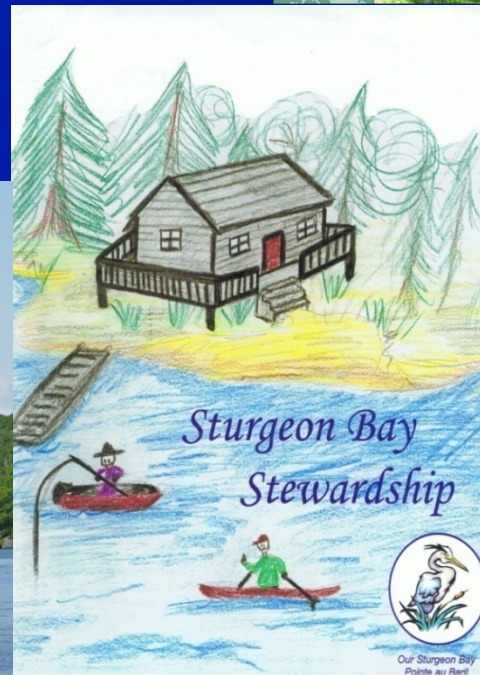
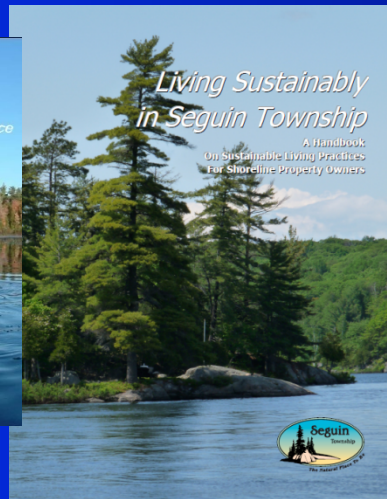
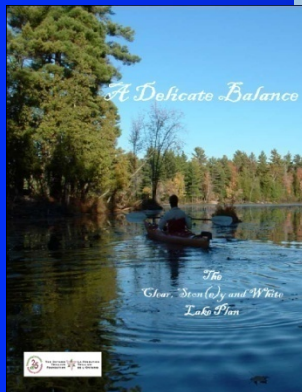
Examples of Lakes in Action



Examples of Lakes in Action

Improved communications

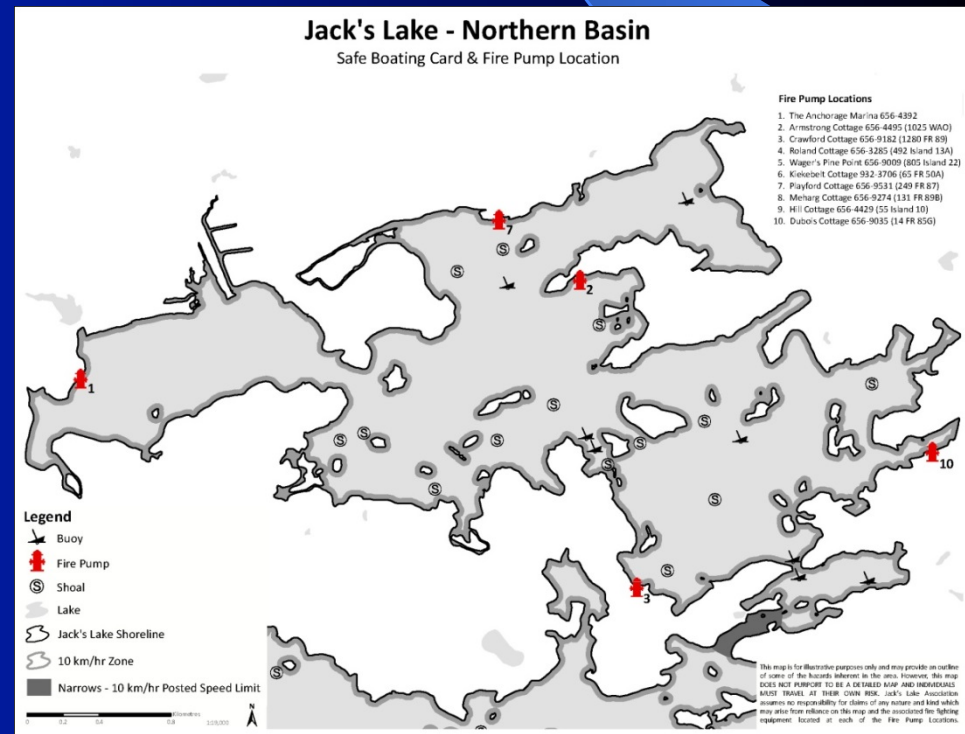
- ✓ Lake Plans, State of the Lake, Action Plans
- ✓ Dock talks, AGM speakers
- ✓ Updated websites
- ✓ Social media



Examples of Lakes in Action

Good Neighbour/Boating

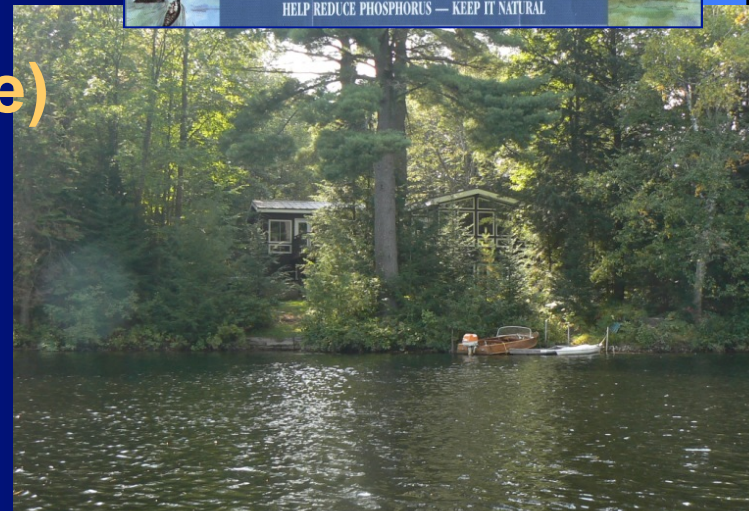
- ✓ Guides and articles
- ✓ Welcome Wagon packages
- ✓ No wake zones
- ✓ Boating restrictions
- ✓ Setting out buoys



Examples of Lakes in Action

Stewardship Actions

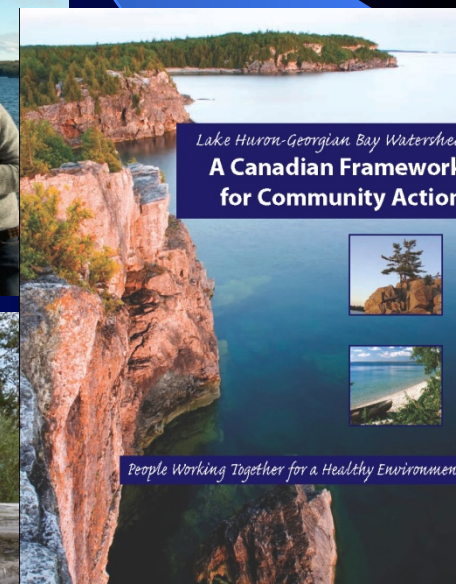
- ✓ Water quality testing
- ✓ Vegetation studies
- ✓ Benthic monitoring
- ✓ Bioblitzes
- ✓ Invasive species monitoring
- ✓ Fish habitat restoration
- ✓ Shoreline assessment/
rehabilitation (Love your Lake)



Examples of Lakes in Action

Youth/Family Events

- ✓ Leech L - benthics
- ✓ Paudash - Rock Bass Derby
- ✓ Clear/Stoney & Skeleton – Junior stewardship
- ✓ Otty – Family Environment Day
- ✓ Farren – Family Fun Day Shoreline Survey
- ✓ Christie – Community Yardsale



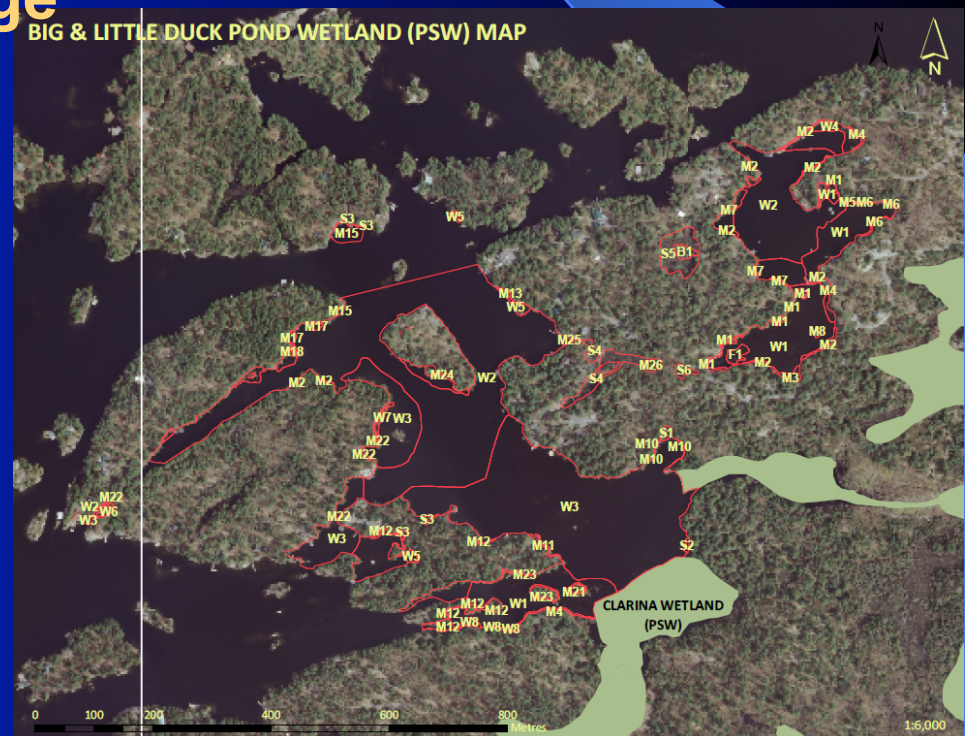
Examples of Lakes in Action

Links to Universities/ Colleges

- ✓ Eagle – Queen's U.
- ✓ Leech – Fleming College
- ✓ U-links



BIG & LITTLE DUCK POND WETLAND (PSW) MAP



Examples of Lakes in Action

Social Events

- ✓ Paudash, Pike, Otty – Flotillas
- ✓ Christie – Summer dances
- ✓ FOOD – BBQs, Fish Fries, Wine & Cheese
- ✓ Meet & Greets
- ✓ Peninsula - >100yrs Regatta
- ✓ Otty - Bioblitzes



Thank you!

Questions?



French
Planning
Services
Inc.
www.lakeplan.com





Blanding's Turtle

photo by Jim Harding

Frog and Turtle Tally Adopt a Pond Program

www.torontozoo.com/adoptapond

