


LAKE LINKS 2017

CONSERVATION AUTHORITIES HELP KEEP
LAKES HEALTHY




1. Planning and Regulations

- implement and enforce section 28 Regulations
 - Provide planning comments and advice to Municipal partners under Provincial Policy Statement 2014 with respect to sections dealing with natural heritage, natural hazards
 - adopt good policy to protect lake such as site evaluating guidelines
 - Regulations for non Provincially Significant Wetlands(MVCA and CRCA)
 - Watershed planning help and advice
 - Natural heritage studies
 - Promote / provide resources for low impact development / green infrastructure
- 


2. Environmental Monitoring and Reporting

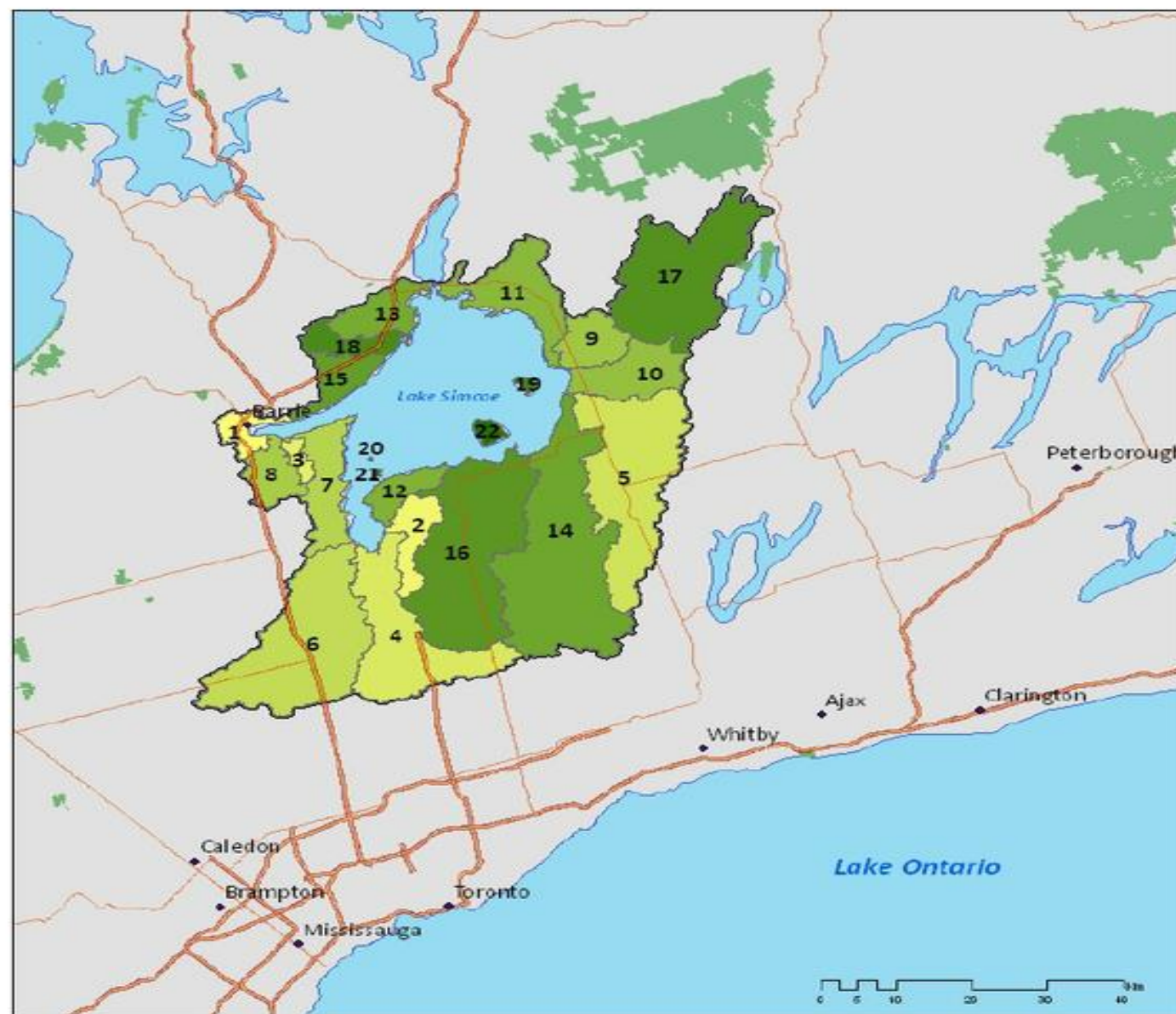
- Surface water quality monitoring
 - Lake water quality monitoring
 - Headwater stream monitoring
 - Watershed report cards / lake reports
 - Subwatershed monitoring (RVCA)
 - Lake planning
- 
- A series of white lines of varying lengths and orientations are positioned in the bottom right corner of the slide, creating a modern, abstract graphic element.

3. Stewardship

- Clean water incentive programs
 - Tree planting
 - Shoreline naturalization program
 - Watershed plans and planning advice
 - Natural shoreline stabilization advice
 - Native plant sales
- 
- A series of white lines of varying lengths and orientations are positioned in the bottom right corner of the slide, creating a modern, abstract graphic element.



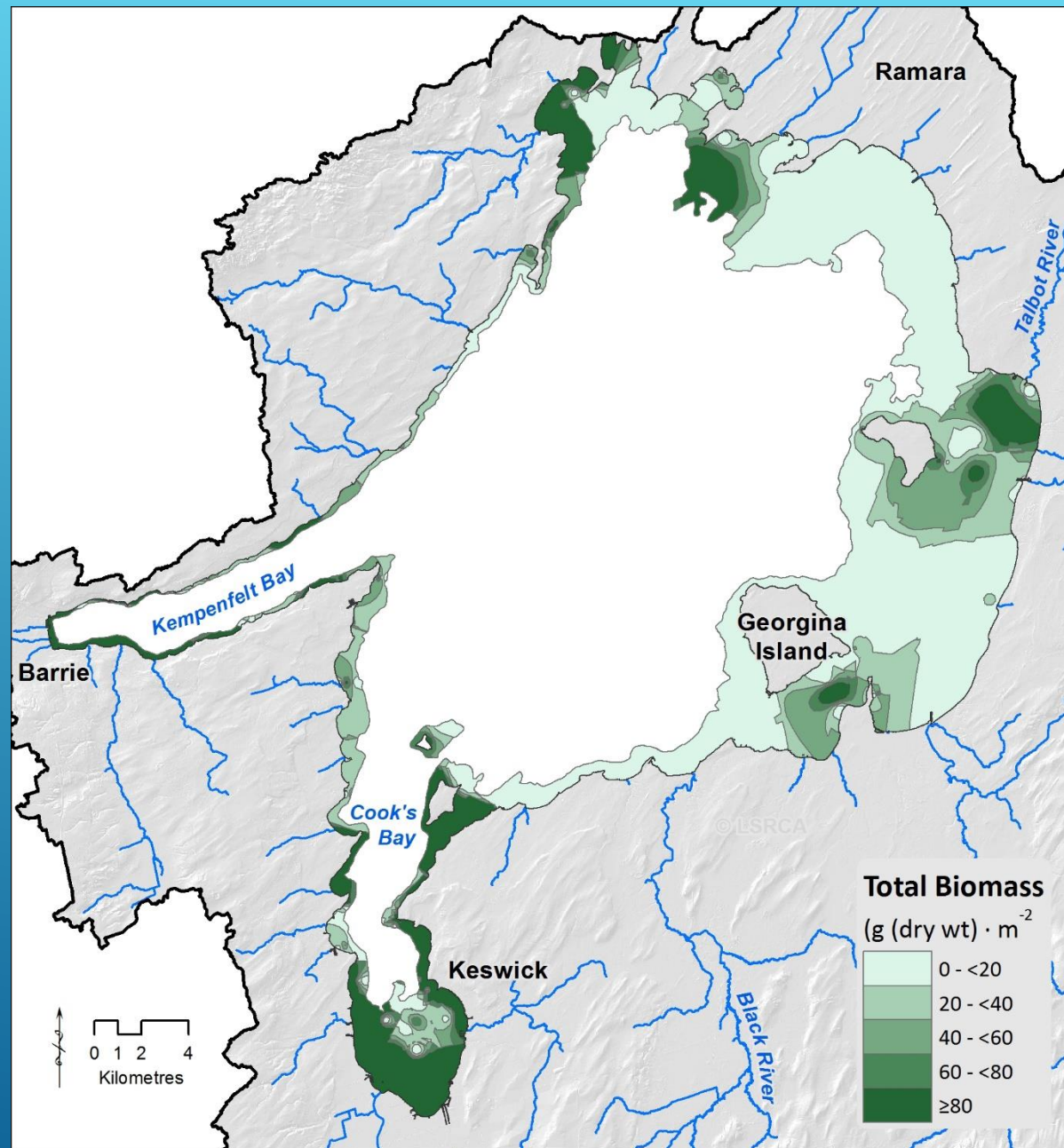
- **Naturalized shorelines**—why they are so important and small changes you can make for a more significant impact
 - **Invasive species**— what are common species and how to remove them
 - **Landscaping**—preferable ways to manage your property at the lake
 - **Storm water, downspout and runoff management**—what you can do on your property to reduce the amount of runoff from directly entering the lake
 - **Benefits of biodiversity**— how can you help provide habitat for the species you would like to see and what are the perks of having them present
- 
- A series of three parallel white diagonal lines are positioned in the bottom right corner of the slide, extending from the middle of the right edge towards the bottom left.

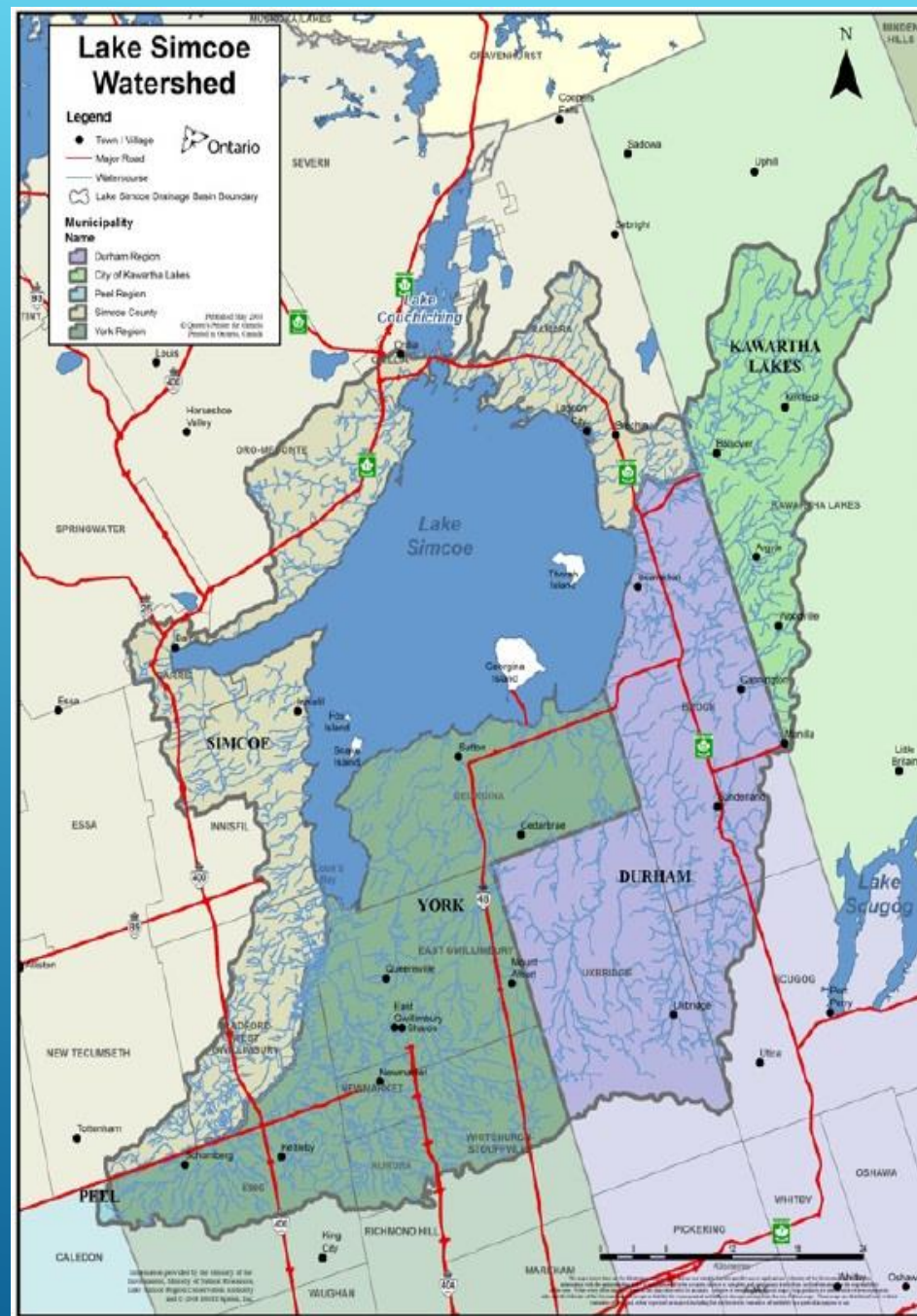


% Forest Cover by Quaternary Watershed

- 1 - 14% Barrie Creeks
- 2 - 14% Maskinonge River
- 3 - 17% Hewitts Creek
- 4 - 22% East Holland
- 5 - 23% Beaver River
- 6 - 23% West Holland
- 7 - 27% Innisfil Creeks
- 8 - 28% Lovers Creek
- 9 - 29% Talbot River
- 10 - 29% Whites Creek
- 11 - 32% Ramara Creeks
- 12 - 33% Georgina Creeks
- 13 - 36% Oro Creeks North
- 14 - 37% Pefferlaw Brook
- 15 - 38% Oro Creeks South
- 16 - 42% Black River
- 17 - 43% Upper Talbot River
- 18 - 48% Hawkestone Creek
- 19 - 58% Thorah Island
- 20 - 72% Fox Island
- 21 - 76% Snake Island
- 22 - 79% Georgina Island







Percent natural cover

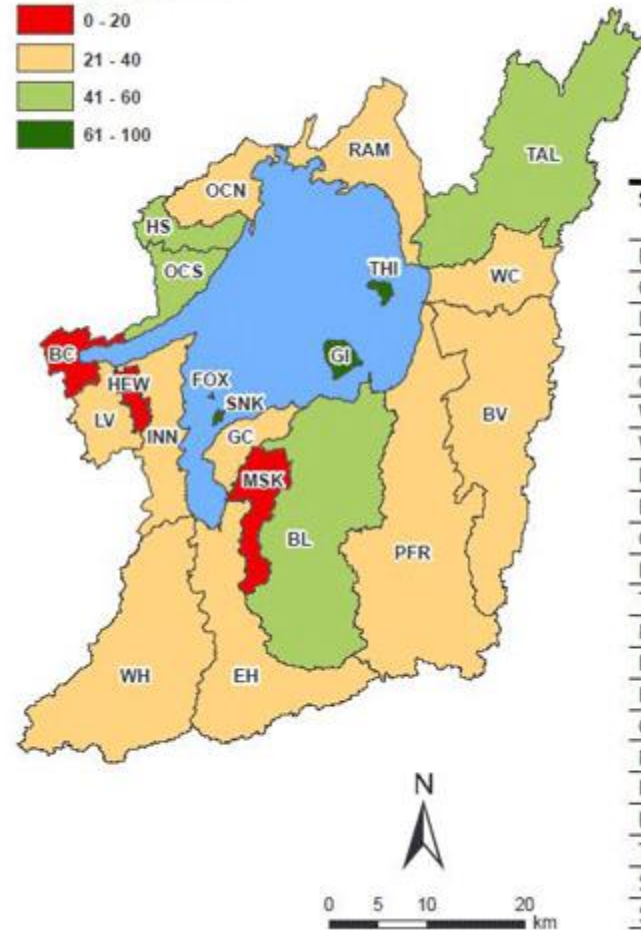
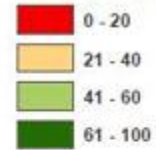


Figure 9: Percent of natural cover in 2008-09 in the Lake Simcoe watershed

SUBWATERSHED	ABBREVIATION	PERCENT NATURAL COVER
Beaver River	BV	28
Oro Creeks South	OCS	41
Barrie Creeks	BC	13
Hawkestone Creek	HS	50
Georgina Creeks	GC	36
West Holland	WH	25
Whites Creek	WC	32
Innisfil Creeks	INN	29
East Holland	EH	27
Georgina Island	GI	80
Lovers Creek	LV	29
Talbot River	TAL	45
Maskinonge River	MSK	18
Ramara Creeks	RAM	35
Hewitts Creek	HEW	19
Oro Creeks North	OCN	39
Fox Island	FOX	69
Pefferlaw River	PFR	38
Black River	BL	45
Thorah Island	THI	61
Snake Island	SNK	74
Simcoe Watershed		35

