



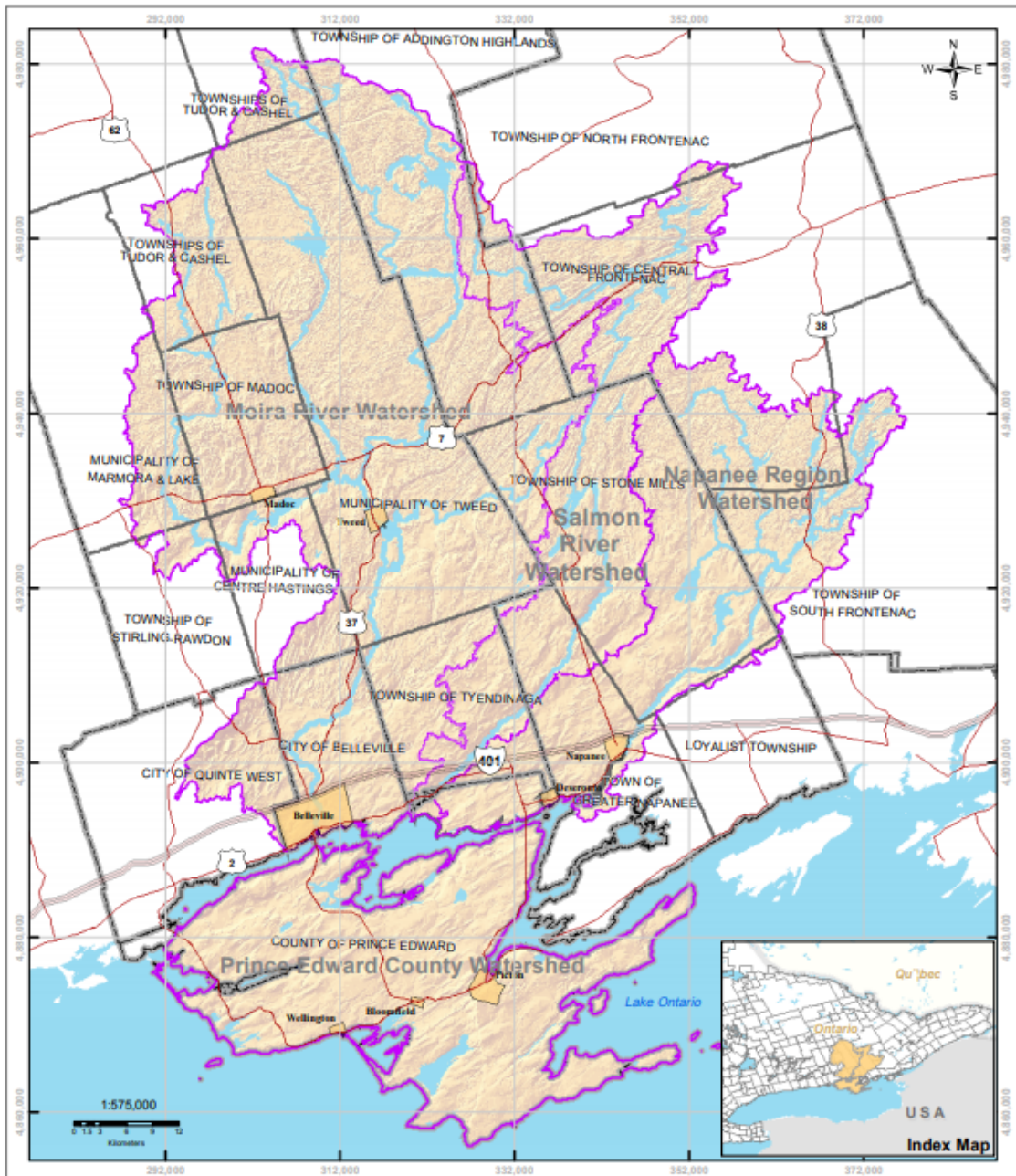
Quinte

CONSERVATION

We do it for you!
your life. your home. your family.



QuinteConservation.ca



6,000 square kilometre area includes the drainage basins of the Moira, Napanee and Salmon Rivers and all of Prince Edward County

Home to over 117,000 people living in 18 municipalities.

Stewardship - Collaborations

Working with lake groups and waterfront property owners.

- Kennebec Lake Association
- Skootamatta District Rate Payers Association
- Big Clear Lake Association
- Horseshoe and Crotch Lake Property Owners Association
- Moira Lake Property Owners Association
- Friends of Stoco Lake
- Friends of Salmon River/Beaver Lake
- Fourteen Island & Mink Lakes Association
- Friends of Napanee River
- Friends of East Lake
- Cole Lake Association



Stewardship Councils
Lennox & Addington
Frontenac
Hastings
Prince Edward



The Area of Concern - designated an Area of Concern in 1985 by the International Joint Commission under the *Great Lakes Water Quality Agreement* between Canada and the United States.

Concerns due to:

- excess nutrients,
- persistent toxic contamination,
- bacterial contamination,
- loss or destruction of fish and wildlife habitat.



PARTNERS:

[Lower Trent Conservation](#)

[Quinte Conservation](#)

[Environment and Climate Change Canada](#)

[Ministry of the Environment, Conservation and Parks](#)

[Ontario Ministry of Natural Resources and Forestry](#)

[Fisheries and Oceans Canada](#)

[Ontario Ministry of Agriculture, Food and Rural Affairs](#)

[Mohawks of the Bay of Quinte](#)

[CFB Trenton](#)

[Canadian Wildlife Services](#)

[Great Lakes Protection Initiative](#)

[International Joint Commission](#)



LIVESTOCK FENCING - • Install fencing to restrict livestock access to a waterway or wetland.
Grant Rate - 70% up to \$7500.

ALTERNATE WATERING SYSTEMS - To be eligible for funding, livestock must be fenced out of a waterway or wetland
Grant rate 50% up to \$7500.

WATERWAY PLANTINGS - a minimum planting zone 5 metres from the shoreline is required. Only native plants are funded and a plant list is provided by the BQRAP. Staff will assist with a planting plan.
Grant rate 100% up to \$1000.

COVER CROPS - this grant covers the purchase of cover crop seed in BQRAP priority areas
Grant Rate - \$10.00 per acre up to \$1000.

Mary Gunning
Quinte Conservation
P: (613) 968-3434 ext 106
E: mgunning@quinteconservation.ca

Veronika Wright
Lower Trent Conservation
P: (613) 394-3915 ext 253
E: veronika.wright@ltc.on.ca

Funding area for Water quality improvement projects, Livestock fencing, Waterway plantings, Alternate watering systems and Cover crops





Do you own shoreline property on the Bay of Quinte or on one of its tributaries? *(up to 10 kms up the trib)*

Get a FREE septic tank pump out, this is a savings of \$200.00 - 250.00.

If you need repairs you could be eligible for an 80% cost-sharing incentive.

Bay of Quinte Remedial Action Plan
FREE
Septic tank pump out

Do you live on the Bay of Quinte or one of its tributaries?
(up to 10 kms up the trib)

You could be eligible for a free septic tank pump out and
an 80% cost-sharing incentive, if minor repairs are needed to
your tank.

Mary Gunning
Quinte Conservation
P: 613-968-3434 ext 106
E: mgunning@quinteconservation.ca
or
Veronika Wright
Lower Trent Conservation
P: 613-394-3915 ext 253
E: veronika.wright@ltc.on.ca

This is a free educational program
providing homeowners with helpful advice on
the care and maintenance of their septic system
and best management practices for their
shoreline.

Bay of Quinte
Remedial Action Plan
Healthy Bay • Healthy Communities

www.bqrap.ca

In partnership with Lower Trent Conservation and Quinte Conservation

Book your Be Septic Savvy
site visit, Now!



WATER QUALITY IMPROVEMENT PROJECTS

Grant Rate	Maximum Grant
50%	up to \$7,500

- Projects must contribute to improving water quality in the Bay of Quinte. A variety of projects will be considered, e.g. constructed wetlands, bioengineering for erosion control
- Funding levels will be determined on a project by project basis

Eligible costs may include:

- Site plans - only native plants are funded, a minimum 5 metre buffer zone is required
- Contractors • Permits • Native plant material
- Erosion control material





Quinte Conservation's Agricultural Land Lease Program

[The Land Lease Program](#) is designed to financially compensate agricultural landowners adjacent to a watercourse draining into the Bay of Quinte.

Funding will be provided as an incentive to lease land and to establish a buffer/riparian zone between agricultural land and the watercourse.

October 23rd, 2015- Mouth of Potter's Creek under Normal Conditions



October 30th, 2015- Mouth of Potter's Creek - 1 Day after a Heavy Rainfall



- Preserving the health of your soil.
- Reducing phosphorus and nutrient run off into neighbouring water bodies.
- Protecting your field from erosion by stabilizing your banks and wet areas.
- Protecting the low lying areas of your field.
- Conserving essential wildlife habitats along the edges of your field.

Be Proactive!
Get Rewarded Financially!



Quinte Conservation's Agricultural Land Lease Program



For more information or to sign up for the Land Lease Program, call [Quinte Conservation](tel:613-968-3434) today!

MARY GUNNING

BQRAP Environmental Technician

(613) 968-3434 ext. 106

mgunning@quinteconservation.ca



QuinteConservation.ca



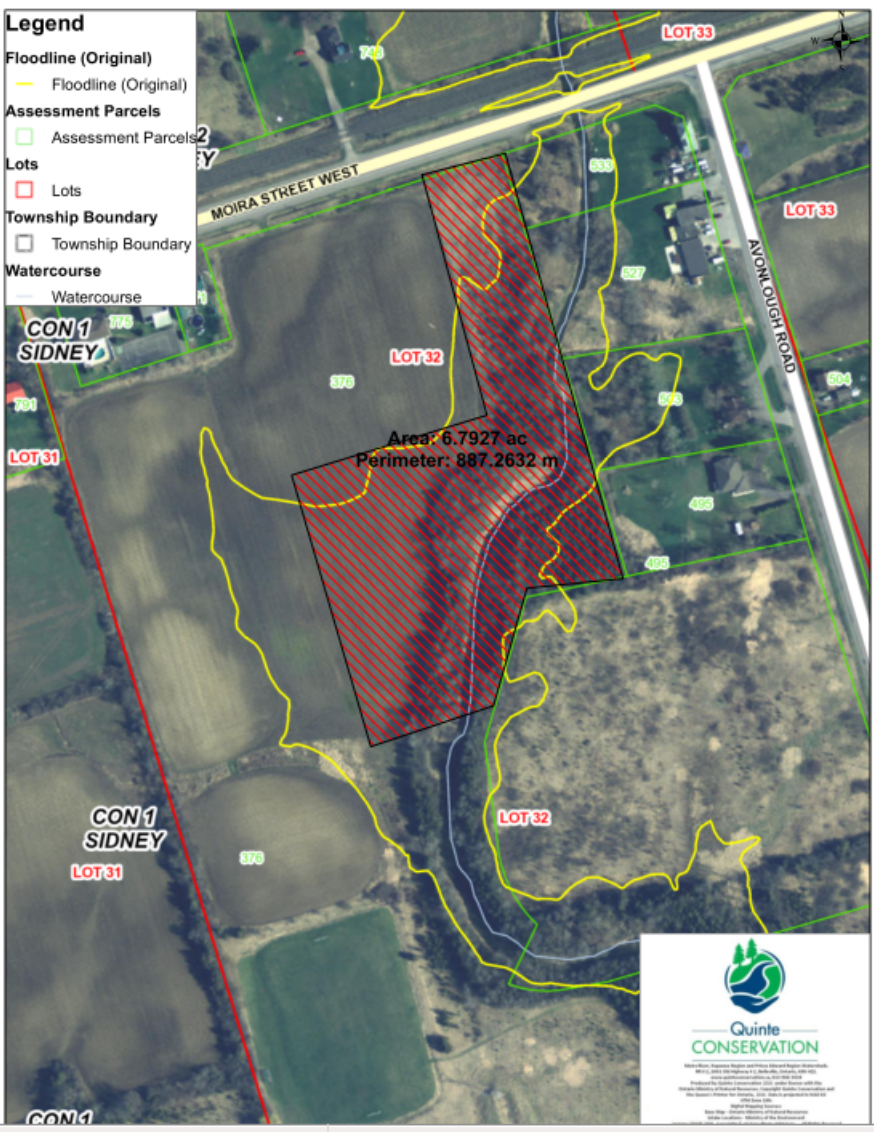
bqrap.ca





Land Lease - Potter's Creek Floodplain Area – Out of Production

Land owner is compensated. Area Planted With 1500 Native Trees & Shrubs



Land Lease Area Left in Natural State – 10 metre buffer out of production
Farmer is compensated.



WORKING WITH LAKE GROUPS AND WATERFRONT PROPERTY OWNERS

- Kennebec Lake Association
- Skootamatta District Rate Payers Association
- Big Clear Lake Association
- Horseshoe and Crotch Lake Property Owners Association
- Moira Lake Property Owners Association
- Friends of Stoco Lake
- Friends of Salmon River/Beaver Lake
- Fourteen Island & Mink Lakes Association
- Friends of Napanee River
- Friends of East Lake
- Cole Lake Association



Seedlings for Shorelines

May 14 - 18, 2018



- ✓ **Maintain Water Quality:** Plants slow the rain water from our properties and roads; It is then absorbed into the soil layer where nutrients and pollutants can be filtered out.
- ✓ **Reduce Erosion:** The roots hold soil in place and protect shorelines from slumping and washing away. Plants reduce the severity of wave and ice action from water currents and they reduce the boat wake - protecting shorelines from damage.
- ✓ **Create Wildlife Habitat:** Over 70% of land-based wildlife and 90% of aquatic life depend on shorelines for some part of their life.
- ✓ **Discourage Canada Geese:** Plants on a shoreline create a visual and physical barrier deterring Canada Geese.
- ✓ **Help Lower Impacts of Flooding:** Plants slow rain water moving down the land (runoff) and allow it to be absorbed into the soil layer.
- ✓ **Protect Property Value:** Shoreline plants protect from unsightly erosion and loss of shoreline. Plants help to protect from wind or water damage and poor water quality.



An eroding shoreline.



Canada geese grazing on a waterfront lawn.



Great blue heron.

The appeal of waterfront views and access are important. Consider maintaining views and access routes when planning your shoreline.

Seedlings for Shorelines – Residential Waterfront Property Owner Program

Available Seedlings May 14 - 18, 2018

Seedlings for Shorelines is a Quinte Conservation program for waterfront landowners within the Moira, Napanee, Salmon, and Prince Edward Watersheds.

Plant short and sweet with wildflowers and low shrubs...

NORTHERN BLUE FLAG IRIS
Iris versicolor

CARDINAL FLOWER
Lobelia cardinalis

SWAMP MILKWEED
Asclepias incarnata



Plant in full sun to part shade.
Requires medium to wet soils.

Tip: plant wildflowers and small shrubs in groups of 3 or more for a larger display of colour when in bloom.

MEADOWSWEET

Spiraea alba

Height: Less than 1 m

Sun: Full sun to part shade (prefers full sun)

Water: Wet to medium soil

Wildlife: Attractive to birds and butterflies; larval host for Spring Azure.

Tolerates browsing, wet soil, and seasonal flooding.

Grows in average, medium to wet, well-drained soil in full sun to part shade.



Low Shrub

LOW BUSH HONEYSUCKLE

Diervilla lonicera



Low Shrub

Height: Less than 1 m

Sun: Full sun to part shade

Water: Prefers moist to dry soil

Wildlife: Attracts pollinators, hummingbirds and seed-eating birds.

Bloom is yellow with shades of red, orange or purple and provides groundcover.

This shrub tolerates poor, rocky or sandy soils.

STEEPLEBUSH

Spiraea tomentosa



Low Shrub

Height: Less than 1 m

Sun: Prefers full sun

Water: Prefers wet soil

Wildlife: Attracts butterflies and other nectar-feeding insects.

Blooms in the summer.

This shrub can be planted right in the water.

Trees and shrubs can delineate property lines and provide privacy...

Tip: To ensure views are maintained consider pruning your shrubs and the lower branches of the trees as they mature.

PUSSY WILLOW

Salix discolor



Medium Shrub

Height: 6-15 ft; 1.8-4.6 m

Sun: Full sun to part shade

Water: Medium to wet soil

Wildlife: Attracts pollinators and small birds.

Tolerates browsing.

Great for erosion control.

Cut to the ground every 3-5 years to maintain a smaller shrub shape.

Stems with catkins may be cut in the spring for indoor arrangements.

RED OSIER DOGWOOD

Cornus stolonifera



Medium Shrub

Avg Height: 5 ft; 1.5 m

Sun: Full sun to part shade

Water: Medium soil

Wildlife: Attracts butterflies, bees, waterfowl, birds, deer, and squirrels.

Blooms are white.

The shrub tolerates browsing and is great for erosion control.

SPECKLED ALDER

Alnus rugosa



Large Shrub

Height: 15-25 ft; 4.6-7.6 m

Sun: Full sun to part shade

Water: Medium to wet soil

Wildlife: Attracts birds and provides excellent cover for deer and small mammals.

This shrub tolerates browsing and is great for erosion control.

This shrub grows more tree-like with an open crown.

BALSAM FIR

Abies balsamea

Height: 50-70 ft; 15-21 m

Sun: Full sun

Water: Medium soil

Wildlife: Small mammals feed on the seeds.

Cone-shaped evergreen with smooth, flat and dark green needles and an aromatic foliage.



Tree

BALSAM POPLAR

Populus balsamifera

Height: 75-100 ft; 23-30 m

Sun: Full sun to part sun

Water: Medium to wet soil

Wildlife: Food for small mammals, grouse, bees, and caterpillars.

Tolerates clay soils, flooding, and pollution.

Has aromatic foliage.



Tree

RED MAPLE

Acer rubrum

Height: 40-70 ft; 12-21 m

Sun: Full sun to part shade

Water: Average, medium to wet soil

Tolerates a wide range of soils but prefers moist, slightly acid conditions.



Tree

Planning For Your Shoreline

Assess your property

- How do you use your shoreline? How do you access it? Do you see any soil erosion concerns? Where is your septic system? Are there any septic concerns?
- How does the water flow down your property? Walk your property and look for high water lines. Identify any erosion concerns, planting can sometimes resolve those.
- Determine your soil type, soil moisture, and amount of sunlight. Which areas are low, wet and prone to flooding? Which areas are high and dry? This will help to determine which species will have most success. Look for what is already growing and adjacent to your property.

* Tip: print a map of your property using Google Maps, apply the satellite imagery layer, and use this as a basis for your shoreline plan.

Planning your planting

- Decide on the size of your buffer. You can start small and expand later.
- Mark access routes to the water to ensure these remain open and accessible.
- Mark out where you want to plant. Consider placing low growing plants in areas where you want to maintain views, and placing larger shrubs and trees along the edges of your property to help define property boundaries, maintain privacy and maintain views to the water.
- Plants can be planted directly into existing sod or in areas with controlled sod removal.

Choosing Your Species

- Select native plants appropriate for your site conditions (soil, sunlight, etc.). Generally, shoreline species are ones that can tolerate average to moist soils.
- Consider flowering or fruit bearing plants for maximum wildlife benefits.
- Check what is already growing locally, as these will do best.
- Decide how many to plant. Shrubs can be planted about 1 metre apart, and trees should be no closer than 2.4 metres. Wildflowers and grasses can be planted 20-30 cm apart. Remember to consider mature plant height and width when spacing plants.



A planted garden-style shoreline with Ontario wildflowers, trees and shrubs.



Minor shoreline erosion that can be resolved with plantings.



A staked no-mow zone to later be planted with some shrubs and trees.



A natural shoreline buffer enhanced with wildflowers.



A natural shoreline buffer enhanced with wildflowers.



Sketch your waterfront property, mark your property's features, buildings, access routes, etc. Mark desired locations for your plants. Consider placing large species to the edges.

SITE CONSIDERATIONS:

Soils Conditions (clay, sand, loam)

Light Levels (full sun, part shade, full shade)

Moisture Levels (wet, average, dry)

*Tip: look for evidence on the landscape of a high water line.



A shoreline planted with Ontario wildflowers and flowering shrubs.



Naturalize your shoreline while maintaining views and access points.

Shoreline Community Planting Projects & Demonstration Sites

1. **Stoco Lake at Memorial Park in Tweed** (*planted with GR 5 students*)
2. **Selby Community Park, Greater Napanee** (*planted with local scouts*)
3. **Riverside Park in Yarker** (*planted with the township*)
4. **Potter's Creek at Loyalist College in Belleville** (*planted with youth*)
5. **Roblin Community Park in Ameliaburgh, Prince Edward County** (*planted with GR 7/8 students*)

* **Monitoring and tracking growth and success of species at each of the sites**



OPEN TO NEW SITES FOR 2018!
mnavrot@quinteconservation.ca

Enhanced Natural Shoreline Demonstration Project



Quinte
CONSERVATION
clean world. safe homes. healthy life.



This is an Enhanced **Natural Shoreline**

**This shoreline has been
left natural and planted with
native shrubs and wildflowers.**

Natural shorelines help to protect our rivers and lakes.

Plant roots stabilize the soil and prevent erosion.

Roots filter nutrients before it enters the lake, helping to
reduce algae and aquatic weed growth.

Shrubs, trees and wildflowers on shorelines provide for
wildlife and deter nuisance geese.



Wild bergamot Cardinal flower Liatris Ninebark Black-eyed susan Meadowsweet Red osier dogwood



For more information
QuinteConservation.ca
or call 613-968-3434

A project of Quinte Conservation and the County of Prince Edward,
with the help of Kente Public School students.

Coming for 2019 !

- Expanded Land Lease Program followed by a buffer planting program.
- New stewardship programs for farmers and expanded partnerships.
- A New Shoreline Planting Program for Waterfront Property Owners Throughout the Quinte Conservation Watersheds.
 - *Wildflowers, Shrubs and Trees
 - *Planning and Planting Alongside _____
Property Owners
- More demonstration shoreline sites in municipal parks, including pollinator habitat with native wildflowers and grasses along shorelines.
- Continued outreach and education!



Maya Navrot

Education and Stewardship Coordinator
Quinte Conservation

mnavrot@quinteconservation.ca

Phone: (613) 968-3434 or (613) 354-3312 ext 131

