

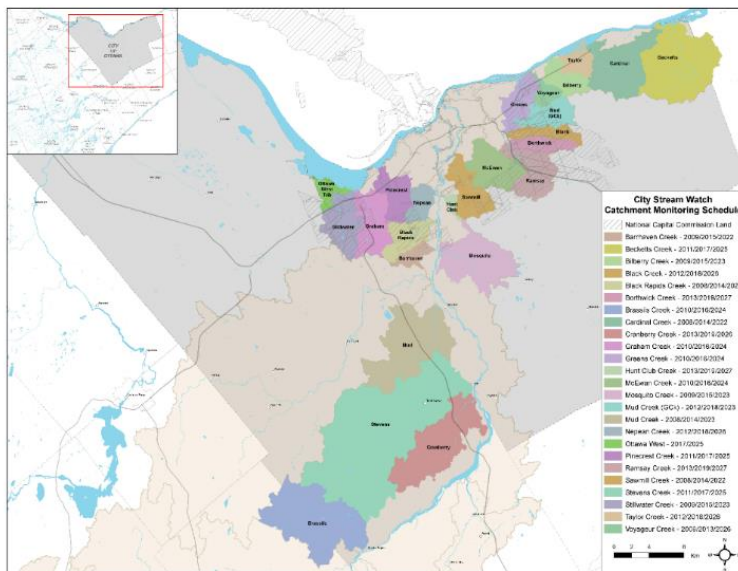
## City Stream Watch Program

RVCA is proud to be part of the City Stream Watch Program. Since 2003, this program has worked with volunteers to monitor and report on information about our urban creeks and streams in the City of Ottawa.

City Stream Watch volunteers:

- conduct stream habitat assessments (physical and biological characteristics)
- sample for and identify aquatic benthic invertebrates
- participate in fish sampling sessions
- monitor stream temperatures
- remove invasive species
- assist in stream rehabilitation and shoreline restoration projects
- clean up streams to remove urban garbage

**Monitoring Schedule:**



Want to learn more?

**Contact:**

City Stream Watch Coordinator  
613-692-3571 ext. 1155  
[citystreamwatch@rvca.ca](mailto:citystreamwatch@rvca.ca)

## Volunteer Opportunities

The City Stream Watch is always looking for new volunteers to help monitor, protect and clean up Ottawa streams. No experience is needed and no minimum time commitment.

Sign-up to our mailing list to join our list of volunteers and receive information on City Stream Watch opportunities. You can also check out our latest events on our volunteer calendar.

## Reports

[View City Stream Watch Reports.](#)

## Partners:

The City Stream Watch Program is a community-based partnership which includes the Rideau Valley Conservation Authority, Heron Park Community Association, Ottawa Flyfishers Society, Rideau Roundtable, Canadian Forces Fish and Game Club, Ottawa Stewardship Council, City of Ottawa and the National Capital Commission.

## Get Involved! Volunteer

## City Stream Watch

### Headwater Field Sampling

## Lake Level Monitoring

### Planting Days and Invasive Species Removals

RVCF

## Weather Watchers

Watershed Watch

Participant Guide

### Lake and Benthic Sampling

## Volunteer Schedule

August 2022						
S	M	T	W	T	F	S
	1	2	3	4	5	6
7	8	9	10	11	12	13
14	15	16	17	18	19	20
21	22	23	24	25	26	27
28	29	30	31			

# Spring Headwaters Field Sampling

During the spring freshet we assess hundreds of headwater drainage features at various remote locations throughout the Rideau Valley watershed. We need your help conducting these assessments.

## What to Expect

- You'll spend a lot of time travelling to remote areas in an RVCA vehicle with one of our professionals. Your day will typically start at 8:00 a.m. and end at 4:00 p.m., however some days may be longer.
- You'll be navigating steep slopes; entering cold and fast flowing water wearing hip waders; and sometimes working in inclement weather (but never in a storm).

## When

- Tentative dates are March through April. Depending on the timing of the spring freshet, this opportunity may start earlier and/or end later

## Skills and Competencies Required

- To be successful in this role, you will already need to be comfortable travelling long distances, working in cold temperatures in and around water, wading through streams and walking in difficult terrain. We are looking for volunteers with good communication skills, positive attitude and the ability to work in teams.

## Skills and Competencies To Be Acquired

You will gain hands on experience:

- applying the Ontario Stream Assessment Protocol module to assess headwater drainage features
- wearing chest waders and working in small streams
- how to operate a multiparameter water chemistry probe
- how to measure surface water velocities
- recognizing sediment deposition
- detecting fish migration barriers
- how to identify various types of vegetation

## Be Prepared

- You will need your own transportation to and from RVCA headquarters at 3889 Rideau Valley Drive in Manotick
- Read the RVCA's [Participant Guide](#)

You will need to provide:

- your own warm and water-resistant clothing (dressing in layers is a good idea);
- your own footwear and extra socks – wear closed toe shoes to get around, to wear chest waders you will require a thick pair of socks with length (no ankle socks);
- your own lunch, snacks and beverages.

## We Supply

- electronic copy of the OSAP manual module: Assessing Headwater Drainage Features
- chest waders and reflective vests;
- sunscreen and DEET bug repellent;
- sampling equipment;
- supervision and instruction.

## RVCA Contact

Contact Jennifer at [jennifer.lamoureux@rvca.ca](mailto:jennifer.lamoureux@rvca.ca)

## Get Involved! Volunteer

City Stream Watch

Headwater Field Sampling

Lake Level Monitoring

Planting Days and Invasive Species Removals

RVCF

Weather Watchers

Watershed Watch

Participant Guide

Lake and Benthic Sampling

## Volunteer Schedule

August 2022						
S	M	T	W	T	F	S
	1	2	3	4	5	6
7	8	9	10	11	12	13
14	15	16	17	18	19	20
21	22	23	24	25	26	27
28	29	30	31			

## Lake Level Monitoring

If you live on a lake and are interested in recording water levels (weekly or every two weeks) and feel you have a good location for a staff gauge to be placed (permanent dock, flat rock etc..) then we would appreciate your help in our monitoring levels on watershed lakes.

**For more information, please contact:**

Justin Robert  
Hydrometric Data Coordinator  
Department of Engineering and Regulation  
Ext. 1194  
[justin.robert@rvca.ca](mailto:justin.robert@rvca.ca)

### Get Involved! Volunteer

City Stream Watch  
Headwater Field Sampling  
Lake Level Monitoring  
Planting Days and Invasive Species Removals  
RVCF  
Weather Watchers  
Watershed Watch  
Participant Guide  
Lake and Benthic Sampling

## Planting Days and Invasive Species Removals

Watch for dates to help us plant trees and shoreline shrubs. Our [Shoreline Naturalization Program](#), [City Stream Watch Program](#) and various other special projects often look for people to help.

Rideau Valley Conservation's stewardship projects offer opportunities to get your hands dirty while taking action in your community. We partner with private landowners, watershed residents, municipalities, and agricultural and academic communities to protect and enhance our natural environment. From habitat enhancement, to tree plantings and clean-ups, your efforts will have an immediate and positive impact on the local environment, and contribute to long-term sustainability.

Follow our volunteer calendar for upcoming events.

### Get Involved! Volunteer

City Stream Watch  
Headwater Field Sampling  
Lake Level Monitoring  
Planting Days and Invasive Species Removals  
RVCF  
Weather Watchers  
Watershed Watch  
Participant Guide  
Lake and Benthic Sampling

## Rideau Valley Conservation Foundation

The Rideau Valley Conservation Foundation (RVCF) is always looking for enthusiastic individuals to become board members and assist with fundraising efforts. To learn more about the RVCF visit [www.rvcf.ca](http://www.rvcf.ca).

**Contact:**

Diane Downey  
RVCF Executive Director  
[diane.downey@rvca.ca](mailto:diane.downey@rvca.ca)  
613-692-3571 ext. 1126

### Get Involved! Volunteer

City Stream Watch  
Headwater Field Sampling  
Lake Level Monitoring  
Planting Days and Invasive Species Removals  
RVCF  
Weather Watchers  
Watershed Watch  
Participant Guide  
Lake and Benthic Sampling

## Weather Watchers

Rideau Valley Conservation Authority promotes a volunteer program called CoCoRaHS which stands for Community Collaborative Rain, Hail and Snow Network. It's a non-profit network of volunteers who measure and map precipitation. This network started at the Colorado Climate Center at Colorado State University in 1998 and has expanded into Canada.

We are looking for volunteers that can record precipitation and enter the data into the CoCoRaHS website or App. Recording includes reading a gauge daily and can also include measuring snow in the winter months. Measuring locations are ideally areas that are open and not surrounded by trees or buildings as they interfere with the precipitation amounts.

CoCoRaHS is standardizing the data collected by having everyone use the same precipitation gauges. The gauge is offered at a discounted cost of \$30 if you sign up on the CoCoRaHS website, however RVCA has a couple of gauges that we can give out.

### For more information, please contact:

Justin Robert  
Hydrometric Data Coordinator  
Department of Engineering and Regulation  
[justin.robert@rvca.ca](mailto:justin.robert@rvca.ca), ext. 1194

### Additional Information:

Please check out the [CoCoRaHS website](#)  
CoCoRaHS contact: [Myles Weishar](#)

### Excellent videos on how to do everything and what CoCoRaHS is looking for:

- [CoCoRaHS in Canada](#)
- [CoCoRaHS HQ](#)

### Get Involved! Volunteer

City Stream Watch  
Headwater Field Sampling  
Lake Level Monitoring  
Planting Days and Invasive Species Removals  
RVCF  
Weather Watchers  
Watershed Watch  
Participant Guide  
Lake and Benthic Sampling

## Volunteer Schedule

August 2022						
S	M	T	W	T	F	S
		1	2	3	4	5
6	7	8	9	10	11	12
13	14	15	16	17	18	19
20	21	22	23	24	25	26
27	28	29	30	31		

## Watershed Watch

Watershed Watch is a monitoring program on 39 lakes in our valley. The program is building a set of ambient (baseline) data that can be used to show trends and changes in the condition of the watershed lakes. It will act as an early warning system to identify trends or problems in water quality.

### The water quality indicators monitored in the program are:

- Total phosphorus (deep points, shoreline)
- Total Kjeldahl nitrogen (deep points, shoreline)
- Bacteria (E.Coli) (shoreline)
- Water clarity/Secchi Depth (deep points)
- Dissolved oxygen/temperature (deep points)
- Calcium (deep point)

Over the first five years of the Watershed Watch program (2001 – 2005), 6 or 7 lakes were sampled intensively (8 times) each year at the deep points and at shoreline sites where there appeared to be possible pollution sources. The program was changed in 2006 to monitor 39 lakes 4 times a year (May thru October). Deep points are sampled 4 times a year, while shoreline sites are sampled twice a year through the summer months (June thru September).

### Volunteer Opportunities:

Anyone can get involved! Join the group of residents on several lakes who volunteer their time and their boats each summer to provide on the water transportation for RVCA staff and a helping hand taking samples and catching bugs. Or watch for special times of the year where we need a little extra help with sampling.

### Want to learn more?

Contact:  
[Sarah MacLeod-Neilson](#)  
Surface Water Quality Coordinator  
613-692-3571 or 1-800-267-3804, ext. 1109

### Get Involved! Volunteer

City Stream Watch  
Headwater Field Sampling  
Lake Level Monitoring  
Planting Days and Invasive Species Removals  
RVCF  
Weather Watchers  
Watershed Watch  
Participant Guide  
Lake and Benthic Sampling

## Volunteer Schedule

August 2022						
S	M	T	W	T	F	S
		1	2	3	4	5
6	7	8	9	10	11	12
13	14	15	16	17	18	19
20	21	22	23	24	25	26
27	28	29	30	31		

# Fall Lake and Benthic Sampling

## VOLUNTEERS WANTED!

### Brief Description

During the fall we collect water quality data in various lakes and streams throughout the Rideau Valley watershed.

### What to Expect

You'll spend a lot of time traveling to remote areas in an RVCA vehicle with one of our professionals. Your day will typically start at 8:00 a.m. and end at 4:00 p.m., however, some days might be longer. You'll be walking steep slopes; entering cold and fast flowing water wearing chest waders; canoeing in lakes and sometimes working in inclement weather.

### When

- Tentative dates are Monday to Friday, October through to November. Depending on the fall conditions, this opportunity may start earlier and/or end later.

### Skills and Competencies Required

- To be successful in this role, you will already need to be comfortable traveling long distances, working in cold temperatures in and around water, wading through streams and walking in difficult terrain. We are looking for volunteers with good communication skills, positive attitude and the ability to work in teams.

### Skills and Competencies To Be Acquired

To be successful in this role, you will already need to be comfortable travelling long distances, working in cold temperatures in and around water, wading through streams, wearing chest waders, touching benthic invertebrates and walking in difficult terrain. We are looking for volunteers with good communication skills, positive attitude and able to work in teams.

- Aquatic sampling field experience;
- wearing chest waders and working in streams;
- operating a multiparameter water chemistry probe;
- use of a Secchi disk, a composite sampler, and a Van Doren
- Kick and sweep techniques for benthic invertebrates

### Be Prepared

You will need your own transportation to and from RVCA headquarters (3889 Rideau Valley Drive, Manotick.

Read the Participant Guide found in the volunteer section of the RVCA website.

You will need to provide:

- your own warm and water-resistant clothing (dressing in layers is a good idea);
- your own footwear and extra socks – wear closed toe shoes to get around;
- to wear chest waders you will require a thick pair of socks with length (no ankle socks);
- your own lunch, snacks, and beverages.

### We Supply

- chest waders and flotation safety equipment;
- sampling equipment, supervision and instruction.

### RVCA Contacts

- [Amanda Lange](#)

## Get Involved! Volunteer

City Stream Watch

Headwater Field Sampling

Lake Level Monitoring

Planting Days and Invasive Species Removals

RVCF

Weather Watchers

Watershed Watch

Participant Guide

Lake and Benthic Sampling