



Watersheds  
C A N A D A

# Fish Habitat Activity Book

My Name: \_\_\_\_\_



# Meet Ottawa's Native Fish!

Trace the line matching the fish to their name and local habitat.



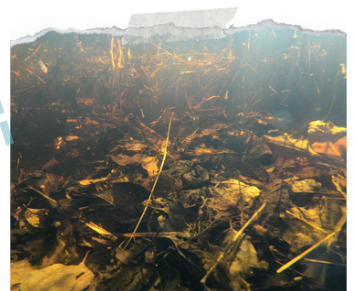
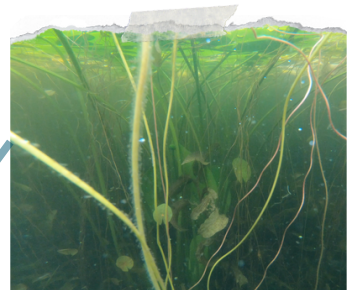
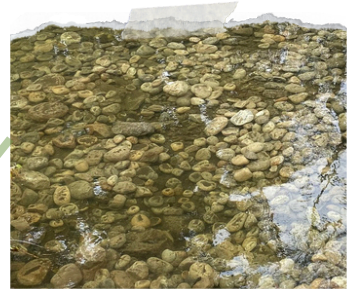
**Sunfish**

**Walleye**

**Yellow Perch**

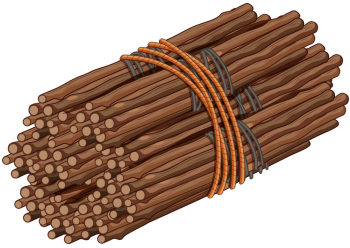
**Brook Trout**

**Largemouth Bass**



# What Do Fish Need in a Freshwater Habitat?

*Circle 7 features of a healthy freshwater habitat for fish.*



Woody debris



Clean water



Money



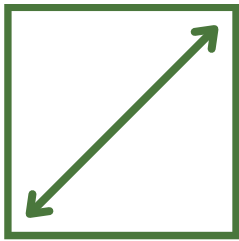
Sports



Aquatic plants



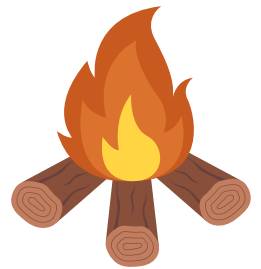
Food



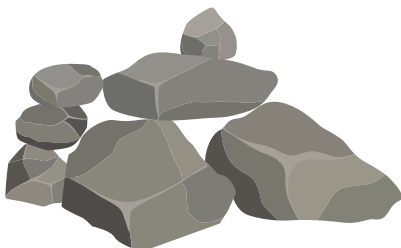
Space



Cars



Fire



Spawning bed  
made of rocks



Clothing



Trees for shade

# Brook Trout Creek Restoration Colouring Page

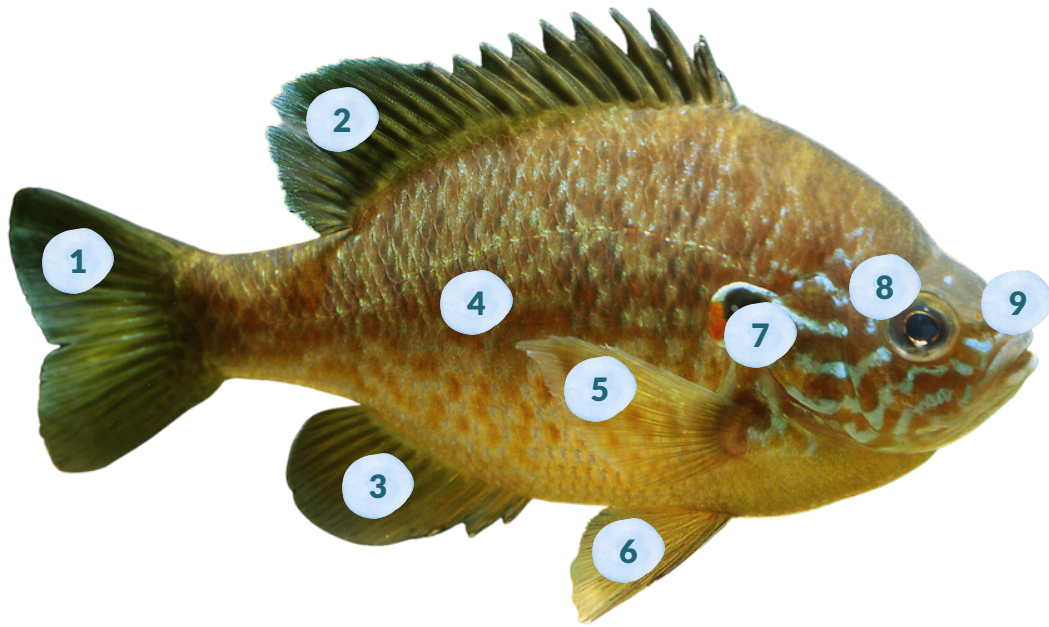


**Trees provide shade to make the water cooler  
for fish species like Brook Trout!**



# Sunfish Anatomy

## Parts of a Fish



1 Tail

4 Scales

7 Gills

2 Dorsal Fin

5 Pectoral Fin

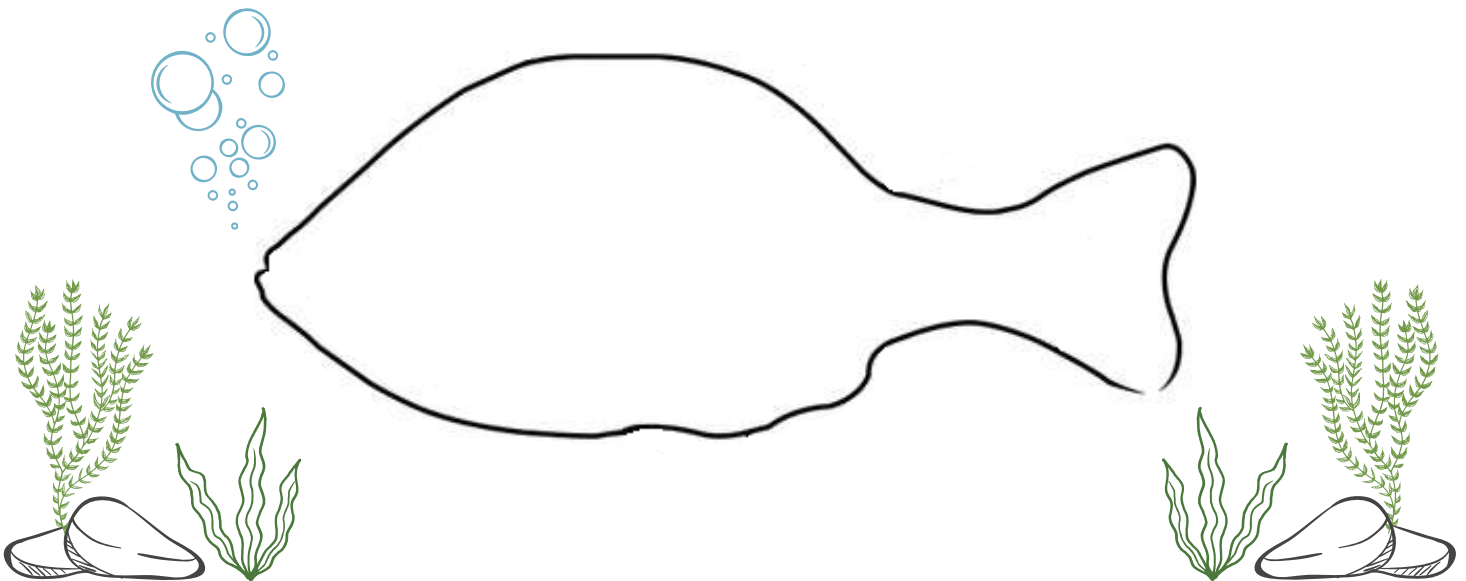
8 Eye

3 Anal Fin

6 Pelvic Fin

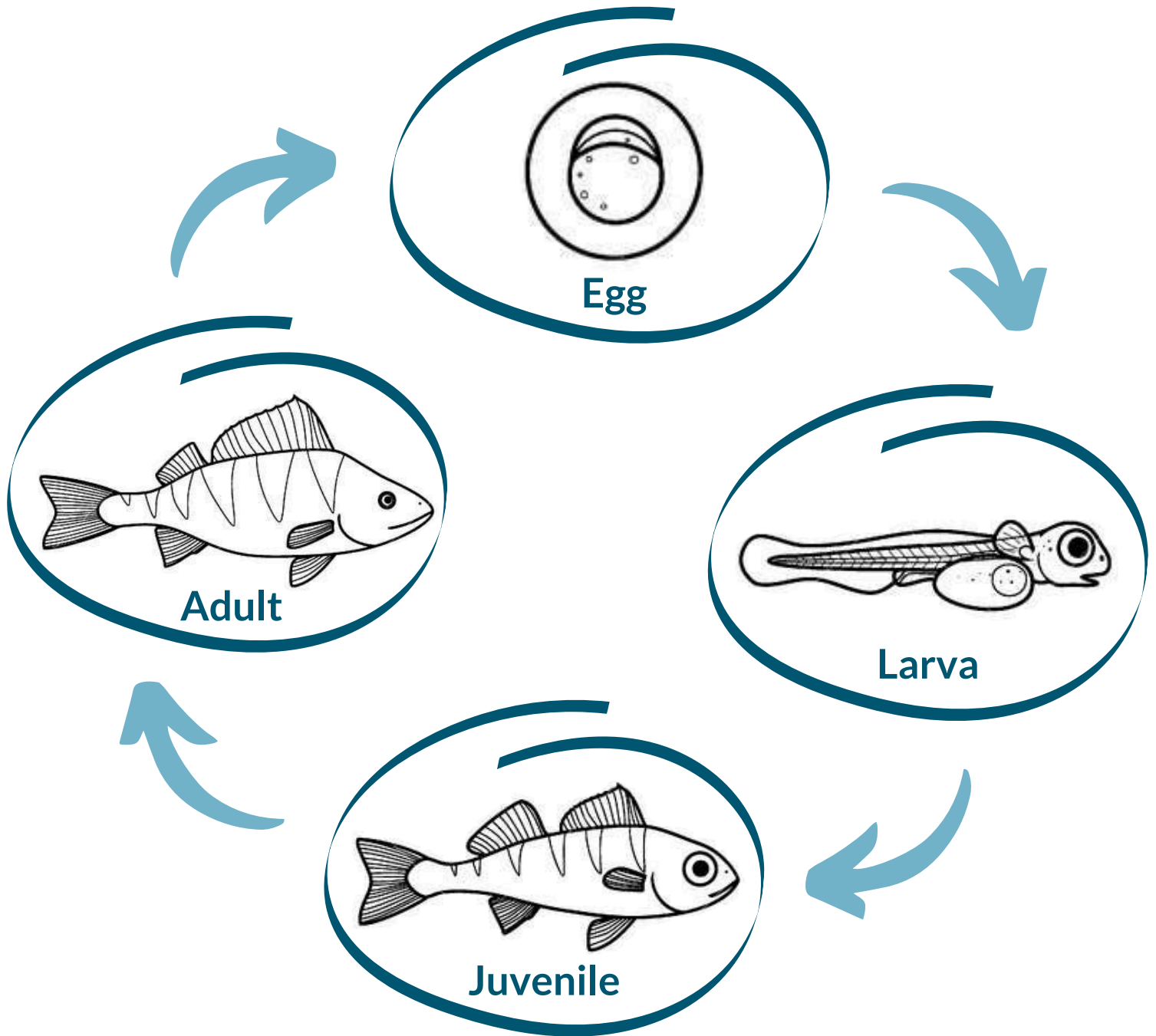
9 Mouth

*Draw and label the 9 parts of a Sunfish on the outline below.*



# Life Cycle of a Yellow Perch

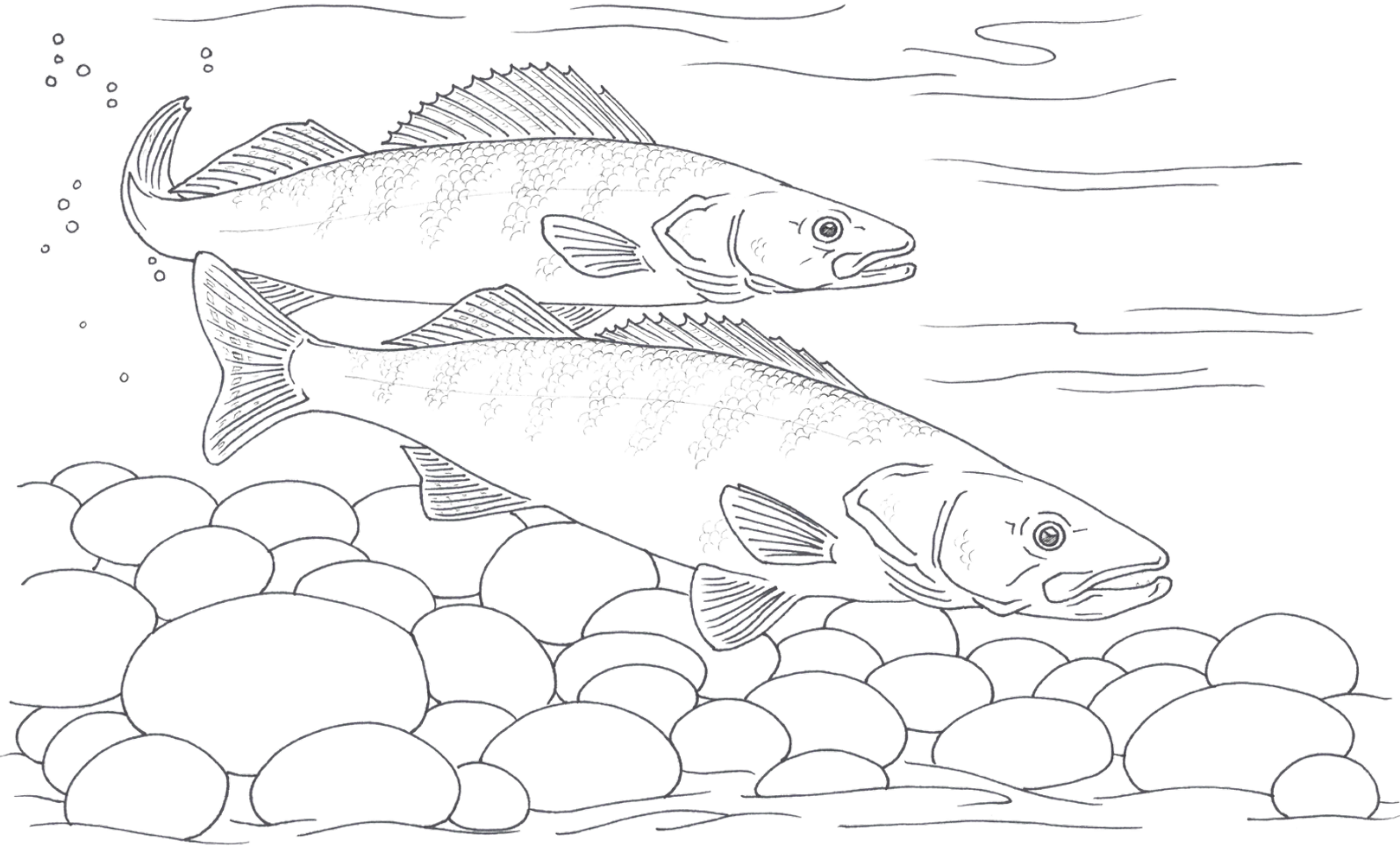
*Colour each stage in the life cycle of a Yellow Perch.*



**A life cycle** is the series of developmental stages during an animal's lifetime.



# Walleye Riverbed Colouring Page

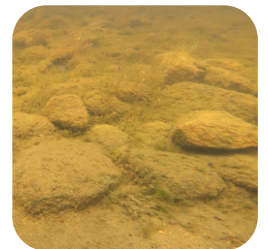


Walleye live near spawning beds made of rock so they can safely lay their eggs in the spaces between the rocks.

Rocks covered in silt and algae changes a riverbed.  
How would this affect local walleye spawning?

---

---



Pictures of silted over spawning beds.

# Some Human Actions Can Harm Freshwater Habitats

Cross out the 5 human actions that can harm freshwater fish and their habitats with a big X!

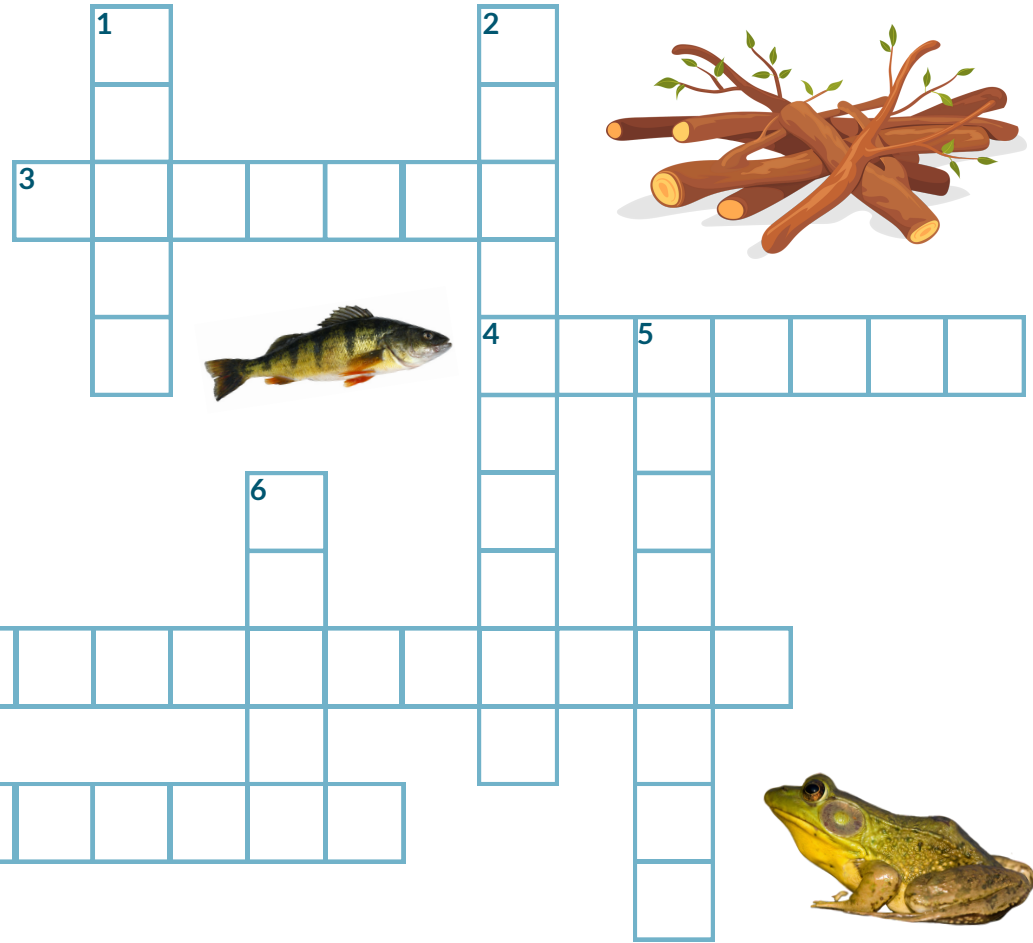




# Freshwater Fish Habitat Crossword Puzzle

## Word Bank

walleye  
branches  
shade  
yellowperch  
frogs  
habitat  
freshwater  
sunfish



## Down

1. Trees provide \_\_\_\_\_ to cool the water for Brook Trout.
2. Lakes and rivers have \_\_\_\_\_ fish, unlike saltwater fish in the ocean.
5. Underwater 'tree forts' are made of woody debris such as tree \_\_\_\_\_.
6. Largemouth bass eat insects, small fish, and \_\_\_\_\_.

## Across

3. This fish lives near spawning beds made of rock.
4. A home that provides food, water, shelter, and space to survive.
7. This small fish has yellow sides with stripes and a white underside.
8. This fish prefers shallow water with lots of vegetation for protection.

# Pike and Woody Debris Colouring Page



Brush bundles made of tree branches and large logs create underwater 'tree forts' for fish to eat, lay eggs, rest, and hide.

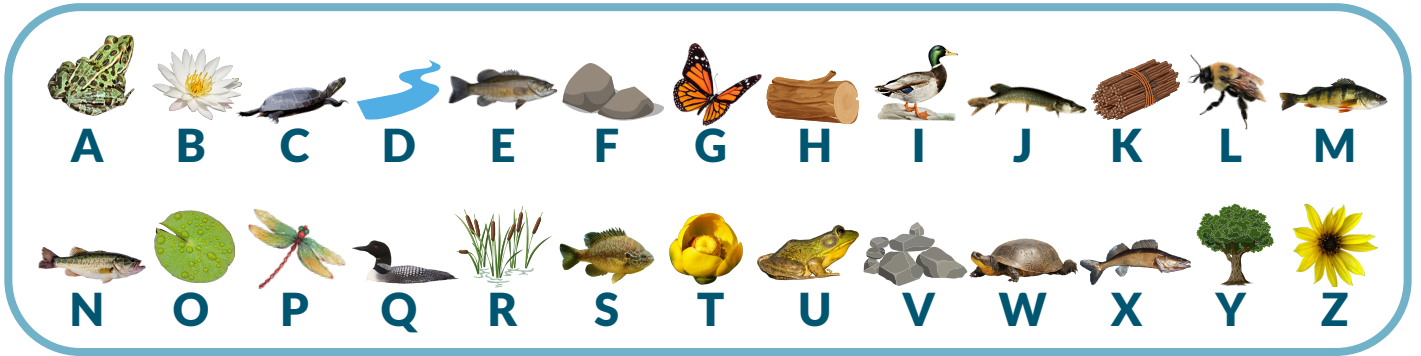
Meet the Northern Pike!





# Hook, Line, and Sinker Code Breaker Jokes

Each letter of the alphabet has a corresponding symbol.  
Match the symbol to the correct letter to reveal the answers to the fish jokes!



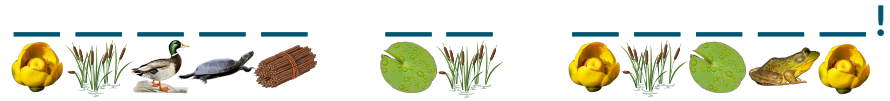
**1** What musical instrument do fish like?



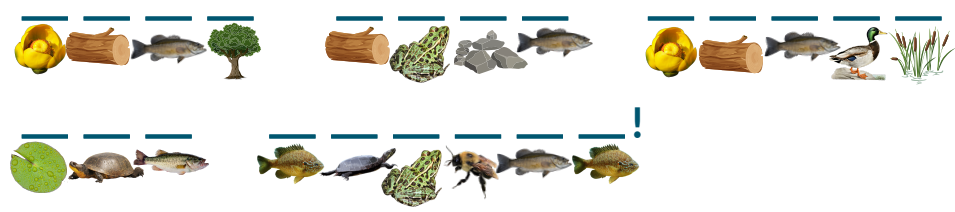
**2** Why are walleye so smart?



**3** What do fish say on Halloween?



**4** Why are fish so easy to weigh?



Answers: 1) bass guitar, 2) because they swim in schools, 3) trick or trout, they have their own scales



Created by:



**Watersheds Canada is a federally incorporated non-profit organization and registered Canadian charity. We are committed to providing programs in communities across the country to engage and help students, community groups, shoreline property owners, and organizations enhance and protect the health of lakes and rivers.**

**[www.watersheds.ca](http://www.watersheds.ca)**

**Funded by:**

